

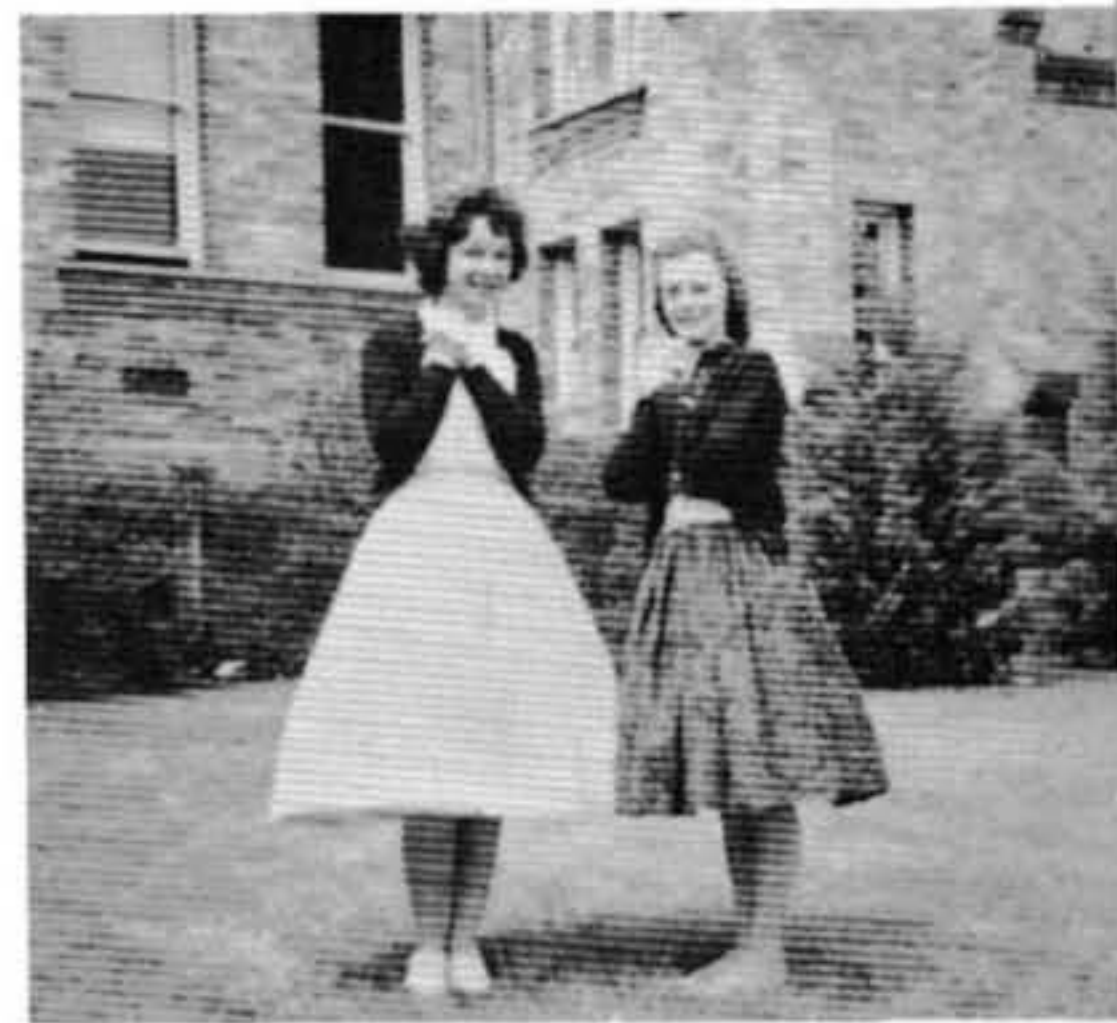
1901

CAT'S PAW

As we come,



happy moments appear,



time grows near,



and we go.





THE CAT'S PAW STAFF OF 1961

Advisor - - - - -	Mrs. Leona Casey
Editor - - - - -	Annette Keelin
Junior Editor - - - - -	Gail Wellman
Advertising Manager - - - - -	Sharon Crouch
Advertising Manager - - - - -	Barbara Friley
Typist - - - - -	Shirley Pelfrey

Foreword

With our school year swiftly closing we pause to catch a final glimpse of the happiness and the friends we have had.

The sound of happy voices, the spirit of good sports, the molding of ideals and aspirations all blend into our high school experiences. We find ourselves holding close to our hearts the fond memories of this past year at C. H. S.

We feel that your satisfaction with this volume is our compensation, and with this thought, we present to you the 1961 CAT'S PAW.

Annette Keelin
Editor



We, the staff, proudly dedicate
the 1961 edition of the CAT'S
PAW to:

Mrs. Leona Casey

L--is for leadership, which she gave to us so freely.

E--represents the energy she always seemed to have.

O--stands for her outward appearance, always so neat.

N--is for the nice things she always had to say to us.

A--represents the excellent advisor that she has been.

C--stands for the cheerful moments that she has shared with us.

A--is for her active service that helped us on our way.

S--means the success she managed to bring to us.

E--represents her encouragement, which never seemed to fail.

Y--is for the years of service she has contributed to the annual.



MR. THOMAS N. McCOY
Superintendent



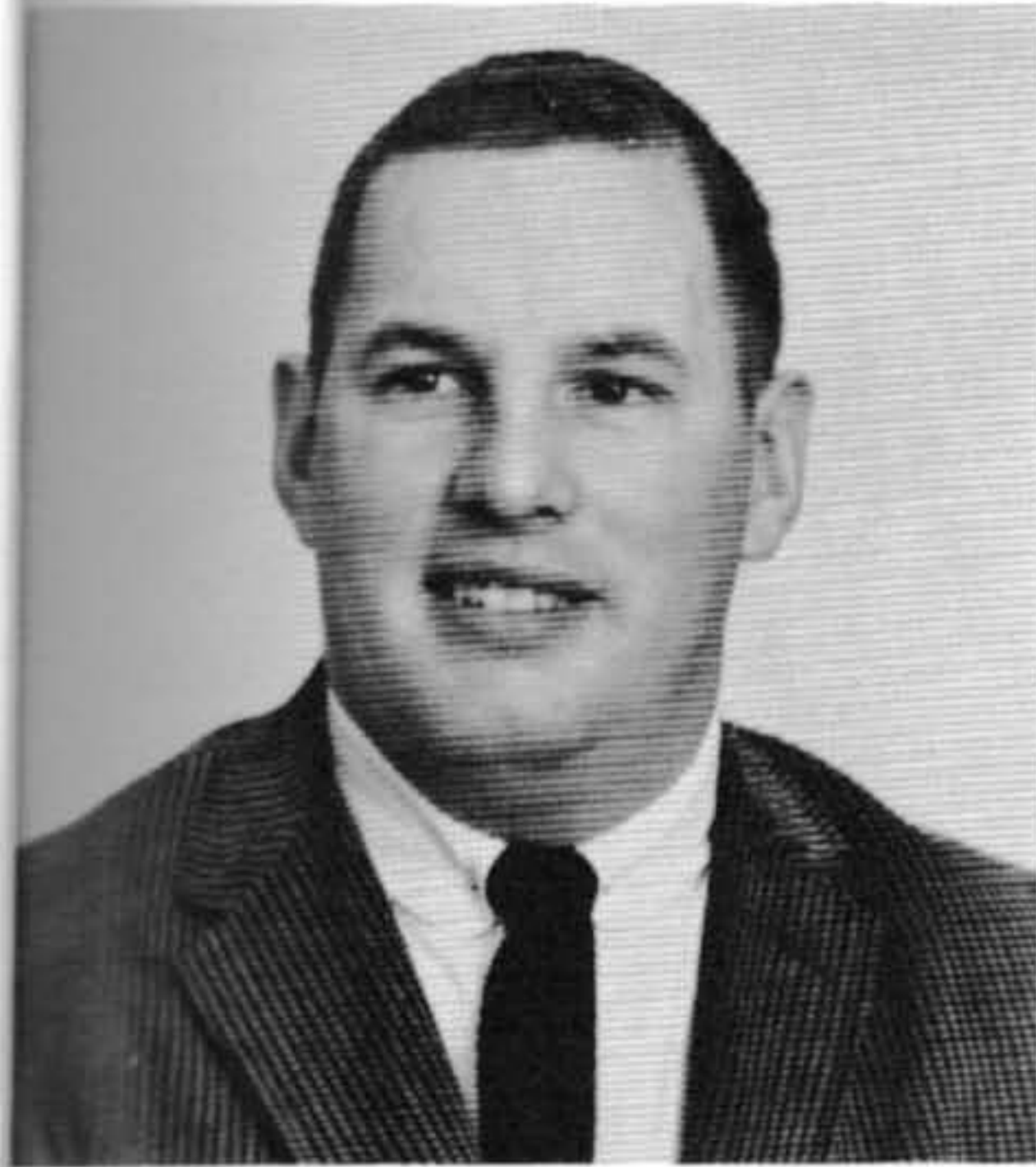
MR. FRANK C. BURNS
Principal

MRS. MARIE ROSS
Secretary



Administration

Faculty



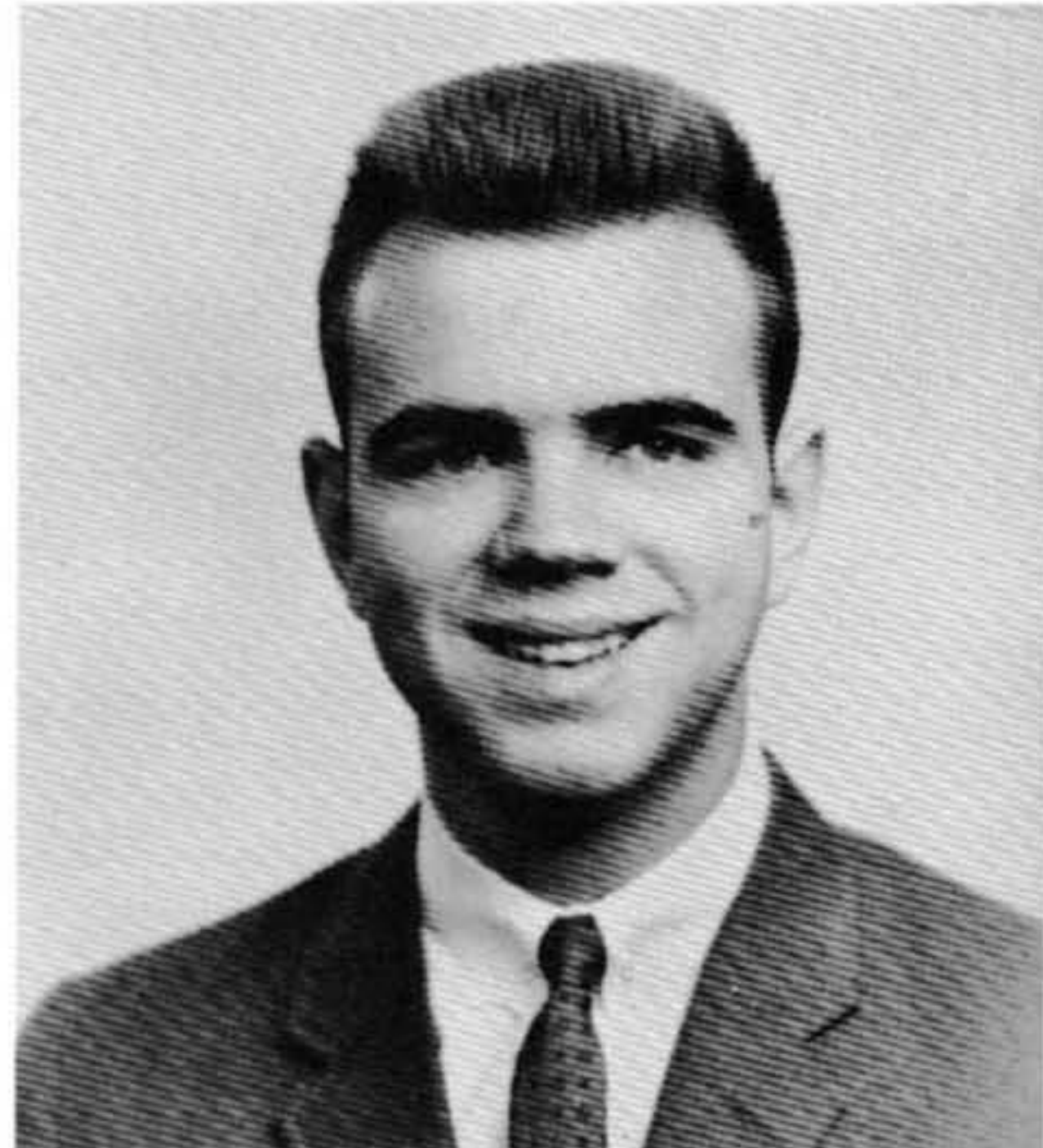
MR. HAROLD BARKER
Coach
Citizenship
Physical Education



MRS. LEONA CASEY
Commerce
American History



MISS MARY BARTRAM
English
Speech



MR. HOWARD RULE
Music
Band Director



Faculty



MISS WILNA EASTHAM
Librarian



MRS. FLORENCE MASON
Latin
Commerce
General Business



MISS WILLA KIBBEY
History
Biology



MRS. FLORIS LILES
English



Senior Class Officers



President, JIM DONOVAN

Vice-President, DOUG SALYERS

Secretary, SUE LYONS

Treasurer, KAREN HEABERLIN

Activity Chairman, SHARON CROUCH

Concession, KAREN GRIEST

Publicity Chairman, SHIRLEY PELFREY



KAREN ANN GRIEST

Citizenship Award, Y-Teens, Band, Pep Club, Science Club, Girls' State, Beta Honor Guard, Beta Club, Future Teachers, Junior Play, Bowling League, D. A. R. Award, Senior Play, Treasurer of Beta Club, Betty Crocker Homemaker Award, Paper Staff, Most Likely to Succeed, Speech Festival, Co-Valedictorian, Elks' Scholarship.

THEODORE BRONSTON
WALTER

Class Favorite, Visual Aid Club, Conservation Club, Vice-President of Conservation Club, "C" Club, Basketball, Boys' State, Football, Paper Staff, Bowling League, Senior Play, Model United Nations, and American History Award.



SHIRLEY MARIE PELFREY

Y-Teens, Pep Club, Science Club, F. T. A., Y-Teen Conference at Tusculum College, President of Y-Teens, Sec. of F. T. A., Press Club, Publicity Chair. of Senior Class, Senior Play, Annual Staff, Candidate for Homecoming Queen.

JON CARL BERGER

Holy Family High School, President of Sophomore Class, Glee Club, Ro Club, Science Club, Vice-Pres. of Science Club, Jr. Class Pres., Beta Club, Beta Honor Guard, Jr. Assoc. Ed. of Paper, Jr. Play, Boys' State, Co-Valedictorian, Elks' Scholarship and Leadership, Senior Play.



LUCILLE IMOGENE FERGUSON

Class Favorite, Y-Teens, V. - Pres. of Y-Teens, Glee Club, Cheerleader, Girls' State, Pep Club, Beta Club, F. T. A., Senior Play, Paper Staff, Pres. of Pep Club, Sec. of Beta Club, All-State Chorus, Most Talented, and Morehead Music Festival.

LARRY ROSS GRAY

Football, "C" Club, Ro Club, Senior Play, All NEKC, Visual Aid Club, Co-Captain of the Football Team.





ANNETTE SUE KEELIN

President of Freshman Class, Class Favorite, Library Club, Y-Teens, Glee Club, Morehead and Lexington Music Festival, Cheerleader, Pep Club, Future Teachers of America, Jr. Editor of Annual, Editor of Annual, Speech Festival, Paper Staff, Danforth Award, Miss C. H. S., Junior Play Cast, Cand. for Spring Carnival Queen, and Senior Play.

JOHN WAYNE BARKER

Visual Aid Club, V. -President of Freshman Class, "C" Club, Track, Football Manager, Ro Club, Baseball, Science Club, Vice-President of Jr. Class, Paper Staff, Senior Play, Sec. of "C" Club, Class Favorite, Future Teachers of America, Model United Nations, and Cutest Senior Boy.



SHARON KAY CROUCH

Y-Teens, Sec. of Freshman Class, Band, Majorette, Beta Club, Girls' State, Beta Honor Guard, Prom Chairman, Activities Award, Editor of School Paper, Junior Play, Pep Club, Sec. of Future Nurses, F. T. A., Balfour Award, Class Favorite, Homecoming Queen, Cutest Girl, Salutatorian, Senior Play, Speech Festival, Elks' Leadership, and Most Athletic.

JAMES ELVIN DONOVAN

Class Favorite, Football, Basketball, Visual Aid Club, Baseball, Ro Club, Vice-Pres. of Ro Club, Track, All NEKC, Prep All-American, Most Athletic in Senior Class, Mr. C. H. S., Pres. of Sr. Class, Pres. of Ro Club, Pres. of "C" Club, Speech Festival, and Capt. of Football and Basketball Teams.



KAREN LORETTA HEABERLIN

Treasurer of Freshman, Soph., Jr., and Senior Class, Y-Teens, Band, Music Festival, Science Club, Alternate Cheerleader, Pep Club, Art Club, Treasurer of Art Club, Treasurer of Science Club, Bowling League, Future Teachers of America, Future Nurses of America, Paper Staff, V. -Pres. of Y-Teens, Wittiest, and Senior Play.

WILLIAM EUGENE BRYAN

Greenup High School, Ashland High School, Basketball, "C" Club, Football Manager, Model United Nations, and Senior Play Cast.



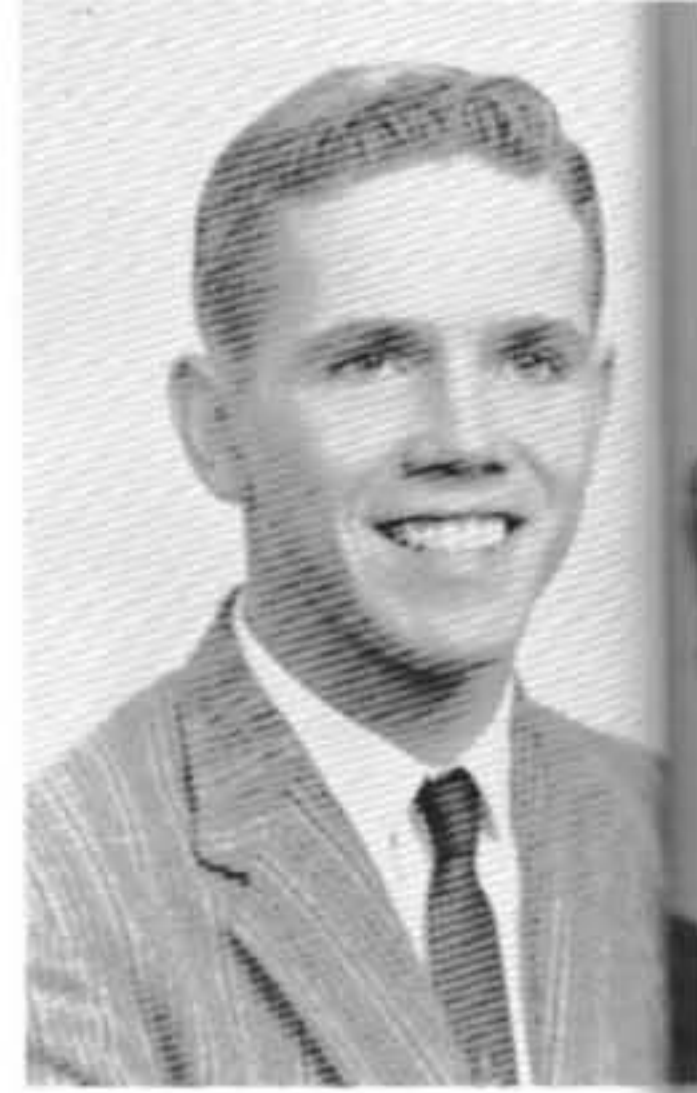


LINDA KAY WELLMAN

Y-Teens, Glee Club, Candidate for Sock Hop Queen, Pep Club, Library Club, Future Teachers of America, Future Nurses of America, Senior Play, Music Festival, Paper Staff, and Best Dancer in Senior Class.

LONNIE EDWARD McCOMIS

Baseball, Basketball, "C" Club, Senior Play Cast, Glee Club, Music Festival, and Science Fair Winner.



LAURA KAYE JORDAN

Y-Teens, Band, Library Club, Science Club, Future Nurses of America, Sophomore Service Award, Pep Club, Major-ette, Junior Play, Music Festival, Future Teachers of America, Bowling League, Senior Play, Speech Festival, Paper Staff, President of Library Club.

PAUL RONALD WILLIAMSON

Visual Aid Club, Basketball, Science Fair Winner, Science Club, Ro Club, Baseball, Football Manager, Paper Staff, Senior Play Cast, and the Friendliest Boy in the Senior Class.



JO ANN CUMPSTON

Y-Teens, Beta Club, Beta Honor Guard, Spring Carnival Queen Candidate, Art Club, Glee Club, Activity Chairman of the Beta Club, Senior Play Cast, and Attendant to Homecoming Queen.

RUSSELL CALVERT WILSON

Ceredo-Kenova High School, Junior Play Cast, Alternate to Boys' State, Football, President of Science Club, "C" Club, Future Teachers of America, Baseball, and Senior Play Cast.





MARY SUE LYONS

Y-Teens, Pep Club, Future Teachers of America, Vice-President of Library Club, Sec. of Library Club, Sec. of Jr. and Sr. Class, Candidate for Carnival Queen, Alternate to Girls' State, Friendliest Girl in Senior Class, and Senior Play Cast.

GARY MICHAEL BRANHAM

Science Club, Band, Glee Club, Track, Music Festival, Ro Club, Art Club, Drum Major, Alternate to Boys' State, Senior Play Cast, All-State Chorus, Model United Nations, Paper Staff, Future Teachers of America, Attended Rotary International at Cincinnati, and Most Talented.



DONNA CAROL RICE

Glee Club, Library Club, Y-Teens, Pep Club, Future Nurses of America, Future Teachers of America, Alternate to Girls' State, Third Place in State Essay Contest, Chaplain of Y-Teens, and Usher for Senior Play.

ROBERT WILLIAM REMMELE

Football, "C" Club, Secretary-Treasurer of "C" Club, Ro Club, Secretary-Treasurer of Ro Club, Boys' State, Visual Aid Club, Paper Staff, Glee Club, Best Dancer in Senior Class, and Senior Play Cast.



EMMA DARLENE POE

Y-Teens, Pep Club, Future Nurses of America, Future Teachers of America, and Senior Play Cast.

WILLIAM THOMPSON





JULIA ANN WILEY

Ashland, Barberton High School, Senior Play Cast, Paper Staff, and Glee Club.

CHARLES HENRY GILLUM

Morehead and Lexington Music Festival, Glee Club, Ro Club, Junior Play Cast, and Senior Play Cast.



ANITA BRYAN BAKER

Greenup High School, Paper Staff, Model United Nations at Transylvania College, and Senior Play Cast.

LARRY KEITH CRIPPLE

Basketball, Track, Science Club, "C" Club, Paper Staff, Glee Club, Future Teachers of America, and Senior Play Cast.



MARY ALICE PORTER

Y-Teens, Future Nurses of America, Library Club, Pep Club, Future Teachers of America, Tallest Girl in Senior Class, and Attendance Award.

JOSEPH WARREN PERDUE

Model United Nations, Baseball, Track, Basketball, and Science Club.





ROSEMARY CONLEY

Y-Teens, Future Teachers of America, Future Nurses of America, Pep Club, and Senior Play Cast.

THEODORE GRANT STORIE JR.

Baseball, Basketball, Glee Club, Science Club, Art Club, President of Art Club, "C" Club, Science Fair Winner, Bowling League, Perfect Attendance Award, Boys' State Alternate, Model United Nations, and Magazine Salesmanship Award.



NANCY JANE STEELE

Y-Teens.

GEORGE PHILLIP SMITH

Football, "C" Club, Visual Aid Club.



MERIDA JUNE CHAPMAN

Y-Teens, Pep Club, Future Nurses of America, Art Club, Science Club, and Senior Play Cast.

KENNETH LEE TAYLOR





GLORIA LOU CORNETT

Y-Teens, Science Club, Future Nurses, Library Club, Junior Play Cast, Senior Play Cast, and Pep Club.



DONALD RAY O'PELL

Baseball, Basketball, "C" Club, and Senior Play Cast, and Art Club.



PHYLLIS BOYD ARTHUR

Y-Teens, Secretary of Y-Teens, Art Club, Usher for Junior Play, Future Teachers of America, and Glee Club.

PATRICIA GAYLE MEADE

Science Club, Pep Club, Secretary of Pep Club, Y-Teens, Future Teachers of America, Library Club, Junior Play Cast, and Senior Play Cast.



Seniors on "Dress Up Day"



Junior Class Officers



President ----- JOHN BATES
Vice-President ----- JOE WEBB
Secretary ----- PATSY WILSON
Treasurer ----- JIM HAMMOND

Juniors



Barbara Friley



John Bates



Susy Lewis



James Hammond



Carolyn Craig



Shelburn Childers



Ruth Adkins



Joe Webb



Lequita Adkins



Jimmy Cottle



Brenda Maynard



David Hunt

Juniors



Gail Wellman



Mike McKnight



Judy Mulvaney



Warren Dixon



Pasty Wilson



Bill Meeks



Sharon O'Daniels



Tom Chaffins



Phyllis Thompson



David Robinette



June Grace



Kenny Stanton



Charlene Boggs

Juniors



Pat Scaggs



Jo Ann Crank



Bill Alley



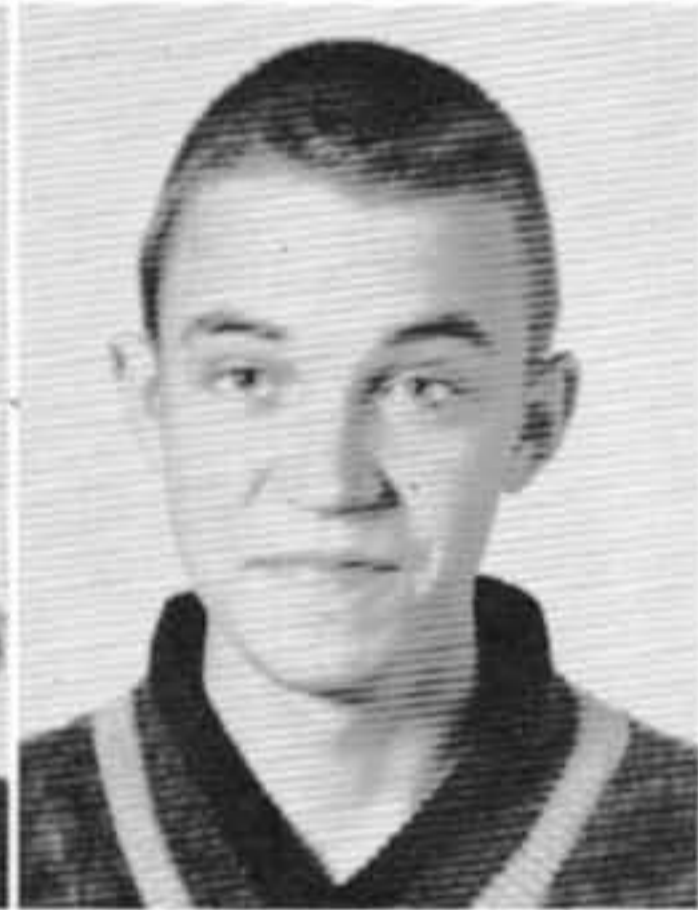
Drucilla Ratcliff



Fred Runyon



Sue Twinam



Lewis Lewallen



Pat Dalton



Joe Stewart



Judy Richardson



Susy Mellon

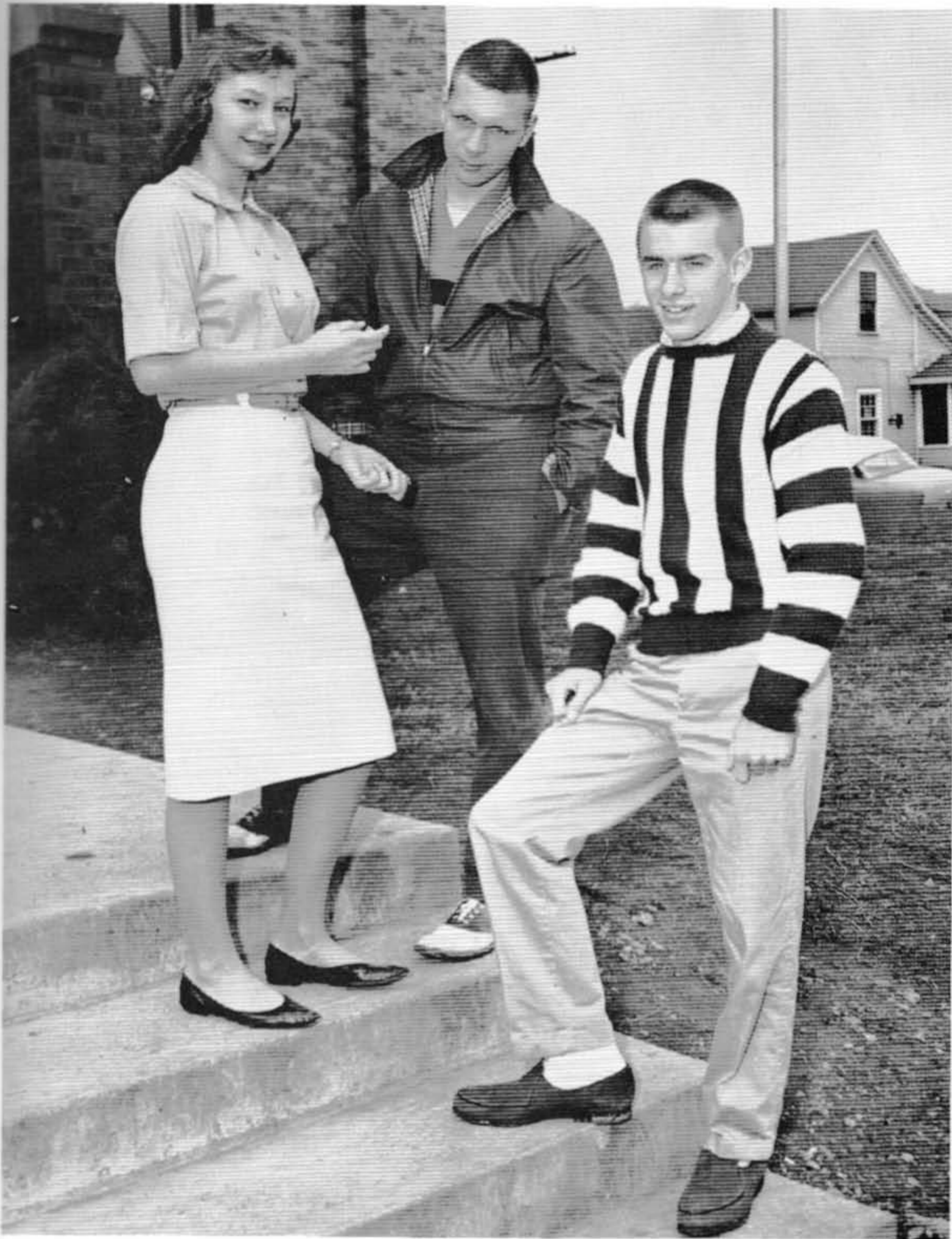


Georgianna Wicker



Betty Murphy

Sophomore Class Officers



President, JIMMY ADKINS

Vice-President, ROGER MOORE

Secretary-Treasurer, LESLIE POPE

Bonnie Bocook

Alva Chaffin



Marie Meredith

Roger Moore

Glorious Colvin



Paul Osborne

Leslie Pope

Jimmy Adkins



Robin Keyser

Tommy Cole



Connie Salyer

Lanny Keesee

Judy Davis



Tony Holbrook

Linda Crank

Ronnie Queen



Stevie Keelin

Mary Pelfrey



Charles Allen

Ann Hall

Larry Lee



Janice Barker

Art Stewart

Diane Meredith

Arnold Griffith

Edith Hodge



Lawrence Hardin

Carolyn Snook

Philip Berger



Alberta Chapman

Billy Adkins

Anna Lee Clark



Thelma Lewallen

Jay Boyd



Sue Williams

Arnold Ealey

Mary Rowe



Eddie Butler

Marie Pulliam

Johnny Clark



Betty Osborne

Kenny Hughes



Frances Osborne

Charles Rice

Dorothy Poole



Larry Hogge

Eddie Bellamy

Bobby Pack

Freshman Class Officers



President ----- DENNIS WILLIAMSON
Vice-President ----- LINDA WORKMAN
Secretary ----- PATRICIA GILLUM
Treasurer ----- SHARON CALDWELL



Doris Colvin
Mike Carley

Lillian Chaffin
James Shivel



Mickey Rice
Freda Cox

Jack Kimberlain
Walter Nell Hedrick



Virginia Frazier
Johnny Tipton

Mary Helms
Bill Stanton



Bill Hawk
Judy Bryan

Bobby Brace
Norma Smith



Patty Holbrook
Jack Lovins

Donna Cantrell
Gary Arthur



James Justice
Hazel Cole

Earl Peterman
Shirley Lewallen



Barbara Gibson
Bill Stewart

Donna Perkins
Richard Jarrell





Faye Russell
Jimmy Pelfrey

Dana Fowler
Harry Perkins



Dennis Williamson
Carol Withrow

David Hale
Sharon Caldwell



Linda Workman
Jerry Heaberlin

Teresa Twinam
Charles Bocook



Larry Crank
Patsy Chaffin

Jack Marushi
Karen Howell



Linda Crace
Bill Tom Ross

Cheryl Mulvaney
Paul Benard



Robert Jarrell
Sue Wellman

Grady Walter
Linda Sebastian



Patricia Gillum
Ronnie Howard

Sara Hunt
Bobby Craycraft





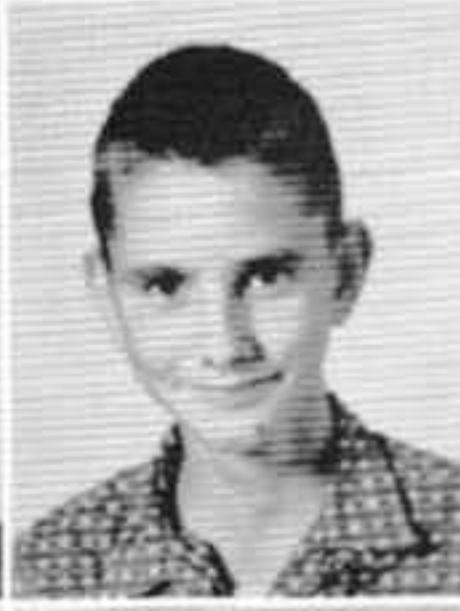
Cheryl Sparks
Joe Cole

Ralph Moore
Clyde Green



James Preston
Joyce Hood

Earl Hardin
Willard Nunley



Bonnie Griffith
Charles Buckley

Richard Cox
Gregory Payne



John Prince
Evelyn Thompson

Charles Withrow



Connie Hughes
William Brainard



Jimmy Pennington
Leonard Hood



Freshmen on "Dress Up Day"

Homeroom Class Favorites for 1961



SOPHOMORES:
Bonnie Bocook, Roger Moore,
and Ann Hall.



SENIORS:
Ted Walter, Sharon Crouch,
Annette Keelin, and Pete Barker.



JUNIORS:
Danny Laney, Barbara Friley,
Mike McKnight, and Susy Lewis.

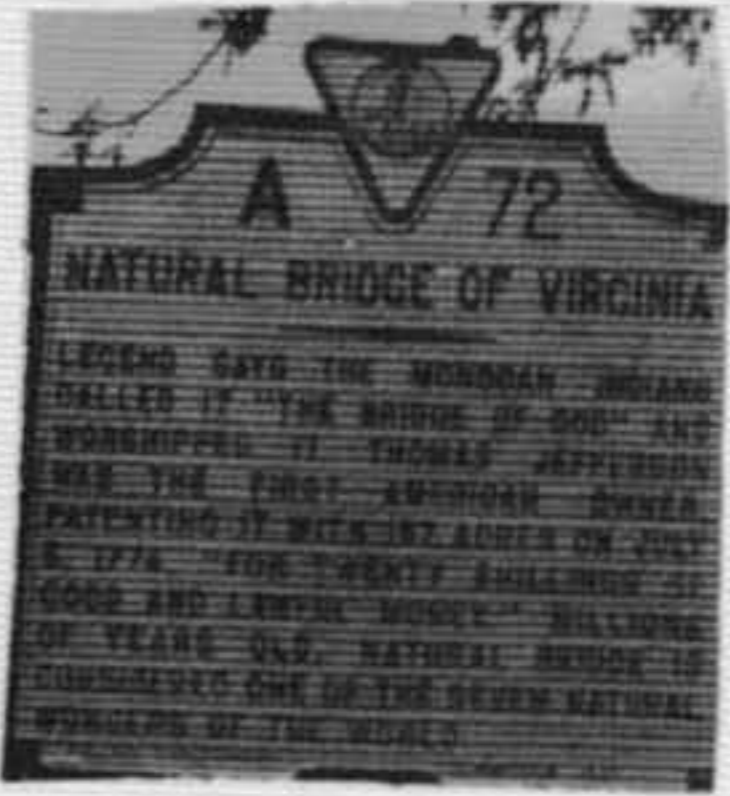


FRESHMEN:
Sharon Caldwell,
Bobby Graycraft, Linda
Workman, and Grady Walter.

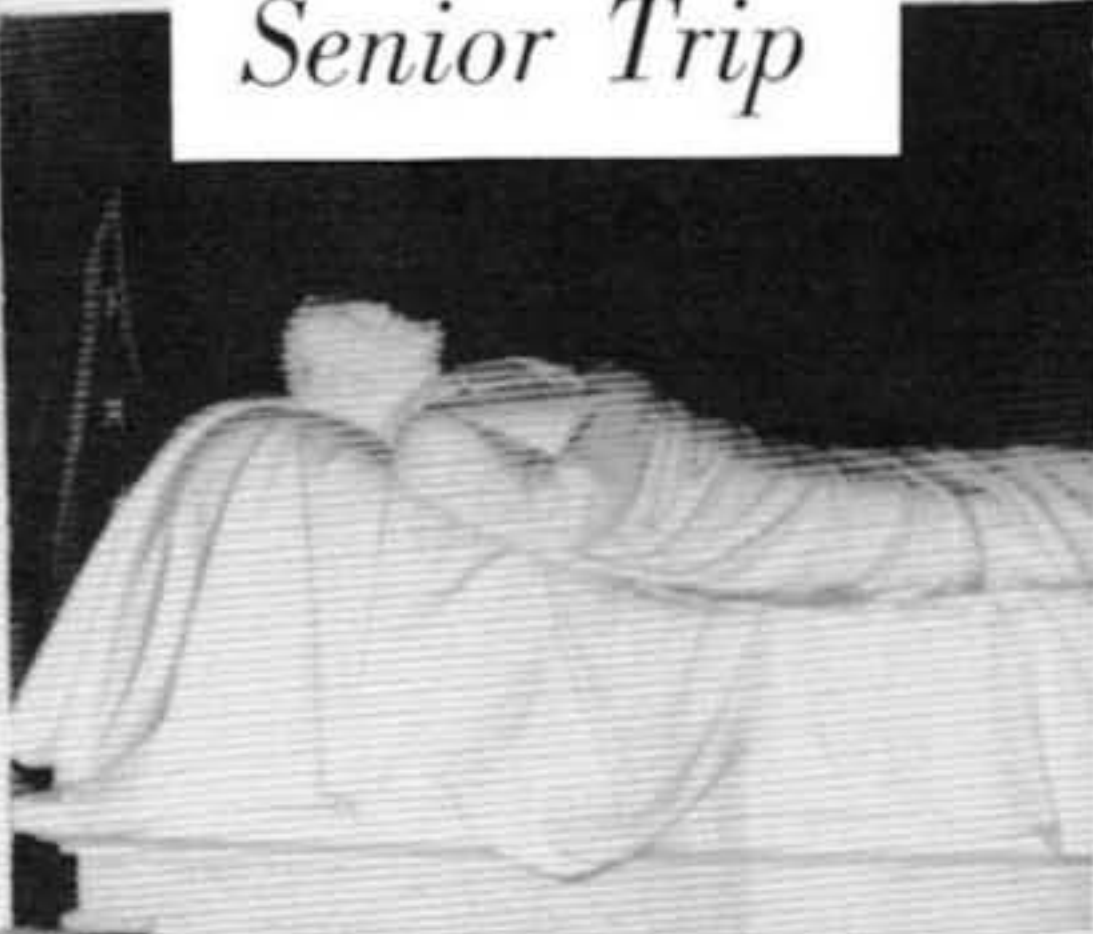
CATLETTSBURG SENIORS

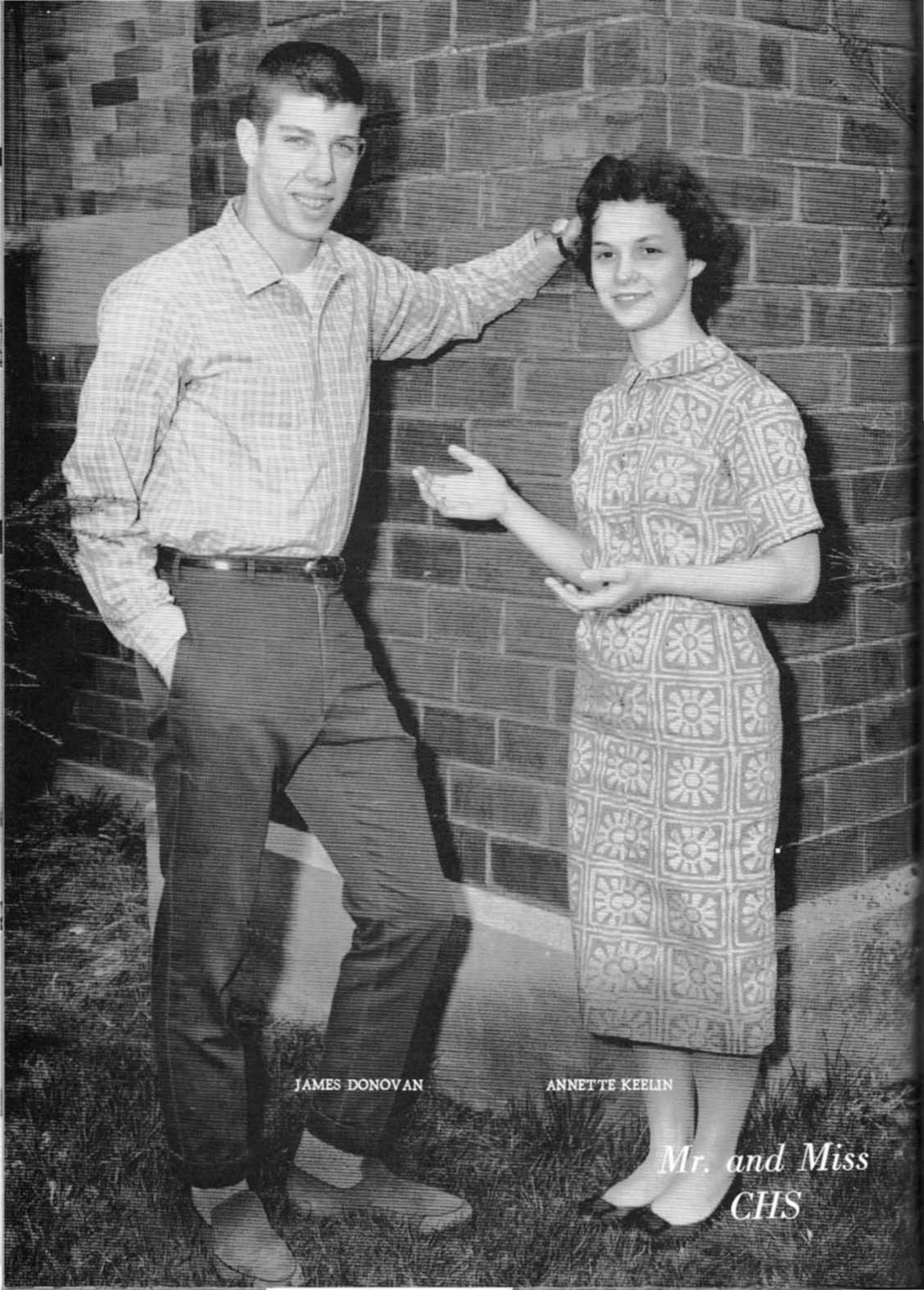


The days of April 24, 25, 26, and 27, 1961, will long be remembered by the 36 seniors and their sponsors, Miss Mary Bartram and Mrs. Leona Casey, who went on their senior trip to Williamsburg, Virginia. We toured historic places such as Natural Bridge, where we saw an unforgettable pageant; Williamsburg, where you feel like you are visiting colonial times; and Charlottesville, Virginia, where we visited Thomas Jefferson's home, Monticello. Everyone was happy to be back home, but I'm sure that this trip has filled an important corner in our lives.



Senior Trip





JAMES DONOVAN

ANNETTE KEELIN

*Mr. and Miss
CHS*

Co-Valedictorians

KAREN GRIEST JON BERGER

3.625



Salutatorian

SHARON CROUCH

3.333

Honors



Karen Griest won the DAR AWARD, Daughters of the American Revolution. This award is based on outstanding citizenship.



Annette Keelin and Gary Branham won the Danforth Award, chosen for achievement.



BETA HONOR GUARDS

Susy Lewis, Patsy Wilson, Lequita Adkins, and Joe Webb.

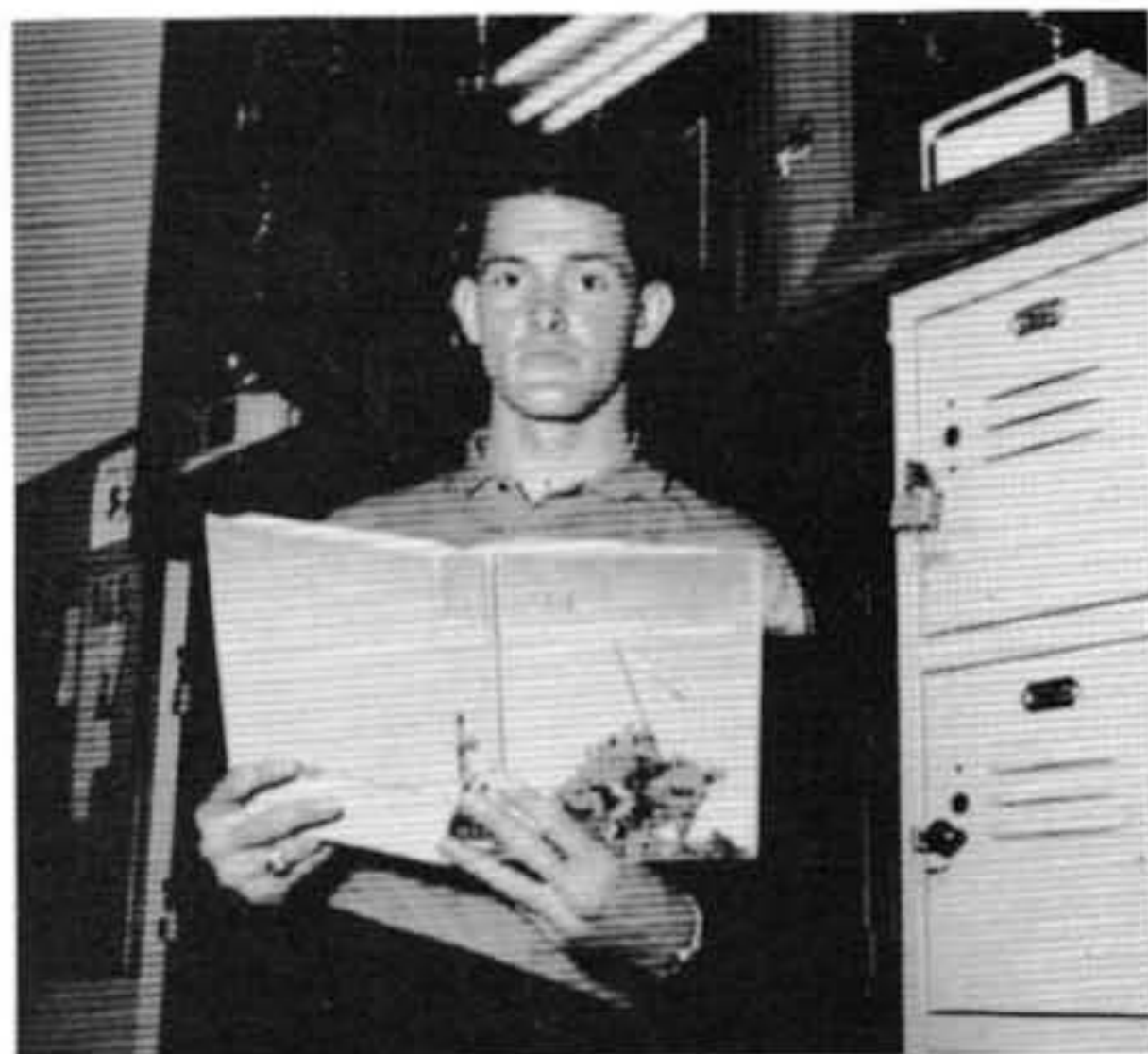
Honors



Karen Griest and Jon Berger were chosen as winners of the Youth Scholarship Contest, sponsored by the Elks National Foundation.



Sharon Crouch and Jon Berger were chosen as winners of the Youth Leadership Contest, sponsored by the Elks National Foundation.



Ted Walter won the American History Award, sponsored by the Kentucky Farmers Bank.



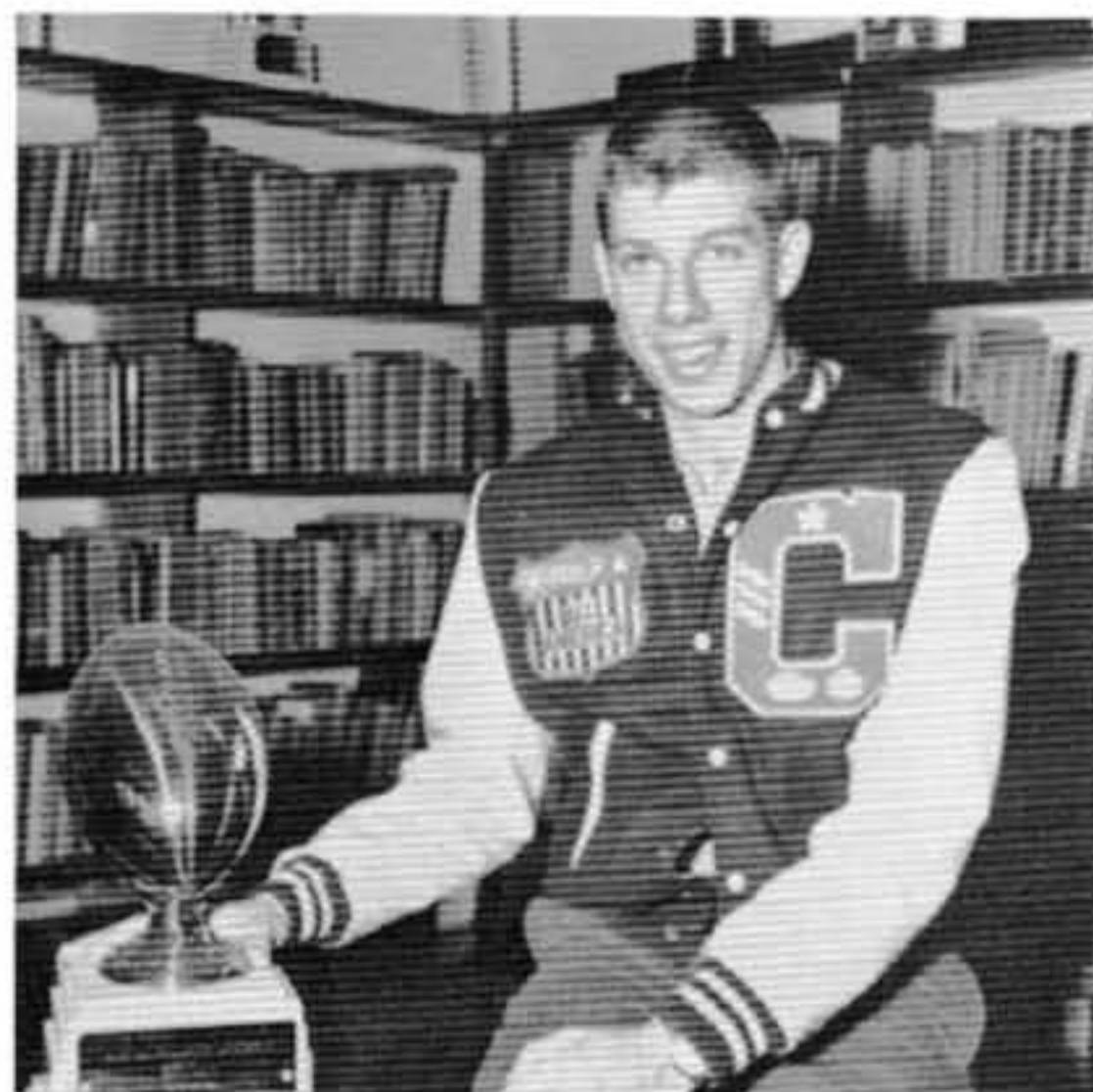
Karen Griest won the Betty Crocker Home-maker Award.



MR. WILLIAM BRADLEY STALLARD

Mr. Stallard, a teacher at Catlettsburg High School, is retiring this year after devoting 36 years of his services to the school. Asked to sum up his services in a few words, he replied, "It has been a very pleasant and agreeable experience."

Honors



Jim Donovan was selected as a High School Prep All-American. This is the first honor of this type and importance ever bestowed upon any other athlete in this high school.



Lucille Ferguson, Tom Cole, Gary Branham, and Judy Mulvaney went to Lexington on January 12, 13, 14, and 15 to sing in the All-State Chorus. They also received a superior rating in the Morehead Music Festival.

Senior "Big Wheels"



"Cutest Boy and Girl"

SHARON CROUCH
JOHN BARKER



"Friendliest"

SUE LYONS
RONNIE WILLIAMSON

"Wittiest"

KAREN HEABERLIN
DICK HALL



"Best Dancers"

LINDA WELLMAN
THUMPER REMMELE

Senior "Big Wheels"



"Most Likely to Succeed"

KAREN GRIEST
JON BERGER



"Most Athletic"

SHARON CROUCH
JIM DONOVAN

"Most Talented"

LUCILLE FERGUSON
GARY BRANHAM



"Tallest and Shortest"

MARY ALICE PORTER
DOUG SALYERS



Highlights of
C.H.S.





The National Beta Club

- ROW 1: Karen Griest, Brenda Maynard, Sharon Crouch, Mary Bartram (sponsor), Gail Wellman, Patsy Wilson, Susy Lewis.
- ROW 2: Jo Ann Cumpston, Lequita Adkins, Lucille Ferguson, June Grace, Barbara Friley, Ruth Adkins.
- ROW 3: Jim Hammond, David Burke, Pat Skaggs, Tom Chaffins, Joe Webb, Jon Berger, Shelburn Childers.

Officers



- President ----- JON BERGER
- Vice-President ----- JOE WEBB
- Secretary ----- LUCILLE FERGUSON
- Treasurer ----- KAREN GRIEST
- Activities Chairman ----- SHARON CROUCH
- Publicity Chairman ----- JO ANN CUMPSTON



Beta Club Installation



Danny Laney, Pat Scaggs, Joe Webb, Shelburn Childers, John
Bates, David Burke, Tom Chaffins, Billy Adams,
Barbara Friley, Ruth Adkins, June Crace,
Jim Hammond, Susy Lewis, Gail Wellman,
Patsy Wilson, Lequita Adkins, and
Brenda Maynard.



President, Jon Berger, pins Joe Webb,
vice-president.



ROW 1: Gail Wellman, Kaye Jordan, Sharon Crouch, Brenda Maynard, Susy Lewis, Pasty Wilson, (sponsor) Mrs. Liles.
 ROW 2: Karen Griest, June Grace, Patty Meade, Jon Berger, Joe Stewart, Shirley Pelfrey, Ruth Adkins, and Barbara Friley.

*Future
 Teachers
 of
 America*

Officers



- President ----- JON BERGER
- Vice-President ----- SUSY LEWIS
- Secretary ----- SHARON CROUCH
- Treasurer ----- SHIRLEY PELFREY



Y-Teens



ROW 1: M. Meredith, K. Jordan, G. Cornett, G. Frazier, L. Chaffins, C. Withrow, F. Russell, S. Le-
wallen, L. Sebastian, D. Colvin, P. Gillum.

ROW 2: C. Hughes, P. Thompson, C. Craig, G. Colvin, L. Workman, K. Griest, R. Conley, M. Pel-
frey, B. Friley, S. Lyons, K. Howell, J. Hood.

ROW 3: B. Bocook, K. Heaberlin, P. Meade, L. Pope, D. Poe, S. O'Daniel, D. Rice, R. Keyser, S.
Wellman, S. Pelfrey, L. Wellman. The sponsor is Mrs. Florence Mason.

Officers

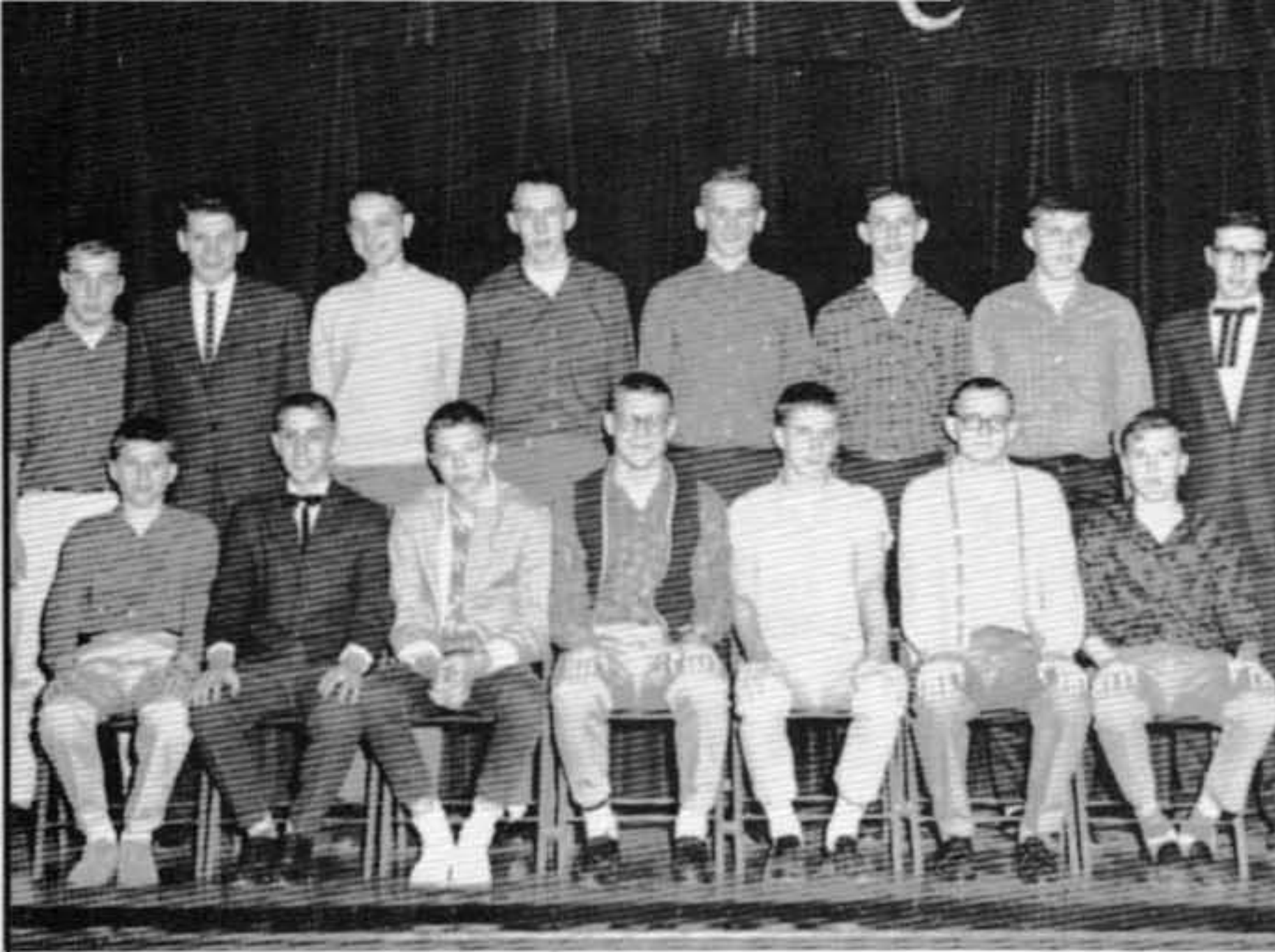
President ----- SHIRLEY PELFREY
 Vice-President ----- KAREN HEABERLIN
 Secretary ----- BONNIE BOCOOK
 Treasurer ----- MARY PELFREY
 Chaplain ----- DONNA RICE
 Inter-Club Counselor ----- ROBIN KEYSER



Officers



President ----- JIM DONOVAN
 Vice-President ----- DAVID BURKE
 Secretary-Treasurer - ROBERT REMMELE



"Ro Club"

FRANK BURNS, Sponsor

J. Clark, R. Williamson, J. Cottle, D. Burke, P. Berger, J. Hammond, S. Childers, D. Hunt, G. Branham, P. Scaggs, L. Gray, T. Chaffins, J. Webb, W. Dixon, and J. Berger.

Library Club

Officers



President ----- KAYE JORDAN
 Vice-President ----- BARB FRILEY
 Secretary ----- SUE LYONS
 Treasurer ----- PATSY WILSON
 Activity Chairman - ANNETTE KEELIN

A. Keelin, B. Friley, P. Meade, L. Crace, J. Bryan, S. Williams, Miss Eastham (Librarian), R. Adkins, F. Cox, S. Caldwell, P. Wilson, P. Gillum. SEATED: K. Jordan, M. Porter, G. Cornett, S. Lyons.

The Tom Brown Tattler Staff



ROW 1: A. Keelin, K. Jordan, S. Crouch, J. Wiley, A. Baker, and S. Lewis.

ROW 2: S. Pelfrey, K. Heaberlin, L. Ferguson, R. Williamson, R. Remmele, J. Barker, J. Berger, and Miss Mary Bartram.

ROW 3: J. Donovan, J. Bates, L. Gripple, L. Wellman, P. Meade, G. Branham, T. Walter, and D. Salyers.

SPEECH FESTIVAL
Morehead State College
March 25, 1961

Staff Officers



Jon Berger, Jim Donovan, John Bates, Gary Branham, Karen Griest, Lequita Adkins, Robin Keyser, Judy Mulvaney, Sharon Crouch, Annette Keelin, Kaye Jordan, and Miss Mary Bartram (sponsor).



SHARON CROUCH ----- Editor
JON BERGER ----- Associate Editor
JOHN BATES ----- Junior Editor
SUSY LEWIS ----- Junior Associate Editor



Pep Club

ROW 1: A. Keelin, P. Gillum, K. Jordan, S. Lewis, S. Crouch, L. Wellman, S. Pelfrey, C. Withrow, F. Russell, L. Workman, S. Lyons.

ROW 2: L. Sebastian, B. Friley, L. Adkins, K. Heaberlin, M. Meredith, J. Mulvaney, L. Ferguson, B. Bocook, G. Wellman, B. Maynard, R. Adkins, and G. Colvin.

ROW 3: S. Wellman, L. Crace, A. Baker, D. Rice, J. Bryan, M. Pelfrey, S. Caldwell, P. Chaffin, D. Poe, R. Keyser, and L. Pope.

"C" Club

Officers



B. Ross, R. Howard, J. Marushi, J. Stewart, J. Hammond, D. Burke, L. Lee, G. Walter, J. Preston, J. Crouch, J. Heaberlin, D. Hodge, D. Williamson, D. Robinette, D. Davidson, B. Bryan, Roger Moore, A. Chaffin, D. Hunt, K. Stanton, E. Butler, B. Craycraft, L. McComis, M. Rice, P. Benard, W. Dixon, L. Gray, D. O'Pell, K. Hughes, J. Shivel, M. McKnight, and R. Wilson.



President - - - - - JIM DONOVAN
 Vice-President - - - - MIKE McKNIGHT
 Secretary - - - - - JOHN W. BARKER
 Treasurer - - - - - JOHN BATES
 Publicity Agent - - - - - LARRY GRAY





Glee Club

- ROW 1: P. Gillium, D. Burchett, P. Arthur, D. Cantrell, H. Cole, D. Perkins, J. Mulvaney, J. Richardson, D. Fowler, P. Holbrook, S. Hunt, J. Wiley, J. Hood, L. Sebastian.
- ROW 2: L. Wellman, K. Heaberlin, L. Grace, J. Bryan, S. O'Daniels, P. Osborne, C. Bocook, J. Hammond, D. Rice, S. Caldwell, P. Chaffins, L. Ferguson, S. Crouch, J. Cumpston.
- ROW 3: G. Payne, D. Robinette, K. Stanton, T. Cole, L. McComis, J. Cole, T. Chaffins, (Mr. Howard Rule), B. Meeks, M. McKnight, L. Cripple, K. Hughes, G. Branham, R. Moore, D. Hodge.



OFFICE GIRLS

HALL MONITORS



S. Crouch, S. Lewis, L. Adkins, R. Keyser, K. Griest, and C. Sparks.



S. Meade, G. Branham, E. Butler, S. Childers, and J. Webb.

Science Fair

SENIOR DIVISION WINNERS



Patsy Wilson, second place biological science; Jim Adkins, third place biological science; Lequita Adkins, first place biological science; Shelburn Childers, third place physical science; Joe Stewart, second place physical; and Ronnie Queen, first place physical science.



JUNIOR DIVISION WINNERS

Joyce Groves, second place biological; Terisha Gilliam, third place, biological, (both from Haney Grade School); Dennis Williamson, first place physical; Arthur Bowling, Jr., first place biological, (Hatfield Grade School); Charles Bocook, second place physical. Linda Crace won third place in physical science.



SCIENCE FAIR COMMITTEE

David Osborne, Tommy Cole, Eddie Butler, Robin Keyser, Philip Berger, Glorious Colvin, Lequita Adkins, and Leslie Pope. Miss Willa Kibbey and Mr. Eugene Foster were managers of the fair. They are both science teacher.

Girls' State



Patsy Wilson, Susy Lewis, Lequita Adkins, and Gail Wellman were chosen to represent our high school at Girls' State. This is one of the highest honors in our school for a girl to receive. They were chosen for outstanding leadership, honesty, personality, citizenship, and general worthiness. Two alternates were chosen, Barbara Friley and Judy Mulvaney. They were chosen by the faculty.

Boys' State

Jim Hammond, John Bates, Shelburn Childers, and David Burke were elected to go to Boys' State. The two alternates are Joe Webb and Tom Chaffins. This is also one of the highest honors for a boy to receive. They were chosen for the same qualities as the girls and were selected by the faculty.



*Senior
Class
Play
1961*

"ANNIE GET YOUR GUN"



Frank Butler ----- GARY BRANHAM
 Annie Oakley ----- SHARON CROUCH
 Minnie ----- ANNETTE KEELIN
 Jessie ----- KAYE JORDAN
 Little Jake ----- HANK GILLUM

The Senior Class of 1961 presented "Annie Get Your Gun" on Friday, April 21, 1961. This is the first time a play of this type has ever been presented here. Music, drama,

Little Girl ----- SUE LYONS
 Charlie Davenport ----- JON BERGER
 Dolly Tate ----- SHIRLEY PELFREY
 Winnie Tate ----- KAREN HEABERLIN
 Foster Wilson ----- TED WALTER



"ANNIE GET YOUR GUN"

Sponsors:

MISS BARTRAM

MRS. LEONA CASEY



costumes, and action from Annie
Cubley made it a memorable affair.
We feel that it will be remembered
by all of us as a big success.

DOUG SALYERS ----- George
LUCILLE FERGUSON ----- Mrs. Schuyler Adams
LINDA WELLMAN ----- Mary
KAREN GRIEST ----- Jane
ROSEMARY CONLEY, ANITA BAKER, JUNE -- (Cowgirls)
CHAPMAN, JULIA WILEY, JO ANN CUMPSTON
DARLENE POE ----- Mrs. Porter
LONNIE McCOMIS ----- Walter
DON O'PELL ----- Conductor
BILL BRYAN and GEORGE SMITH ----- (Cowboys)
MISS BARTRAM



Pawnee Bill ----- RONNIE WILLIAMSON
Chief Sitting Bull ----- LARRY CRIPPLE
Buffalo Bill ----- RUSSELL WILSON





The Junior Class Play

"THE SKELETON WALKS"

Shelburn Childers, Judy Mulvaney, Patsy Wilson, Joe Webb, Ruth Adkins, Lequita Adkins, Delbert Hodge, Susy Lewis, and Gail Wellman.



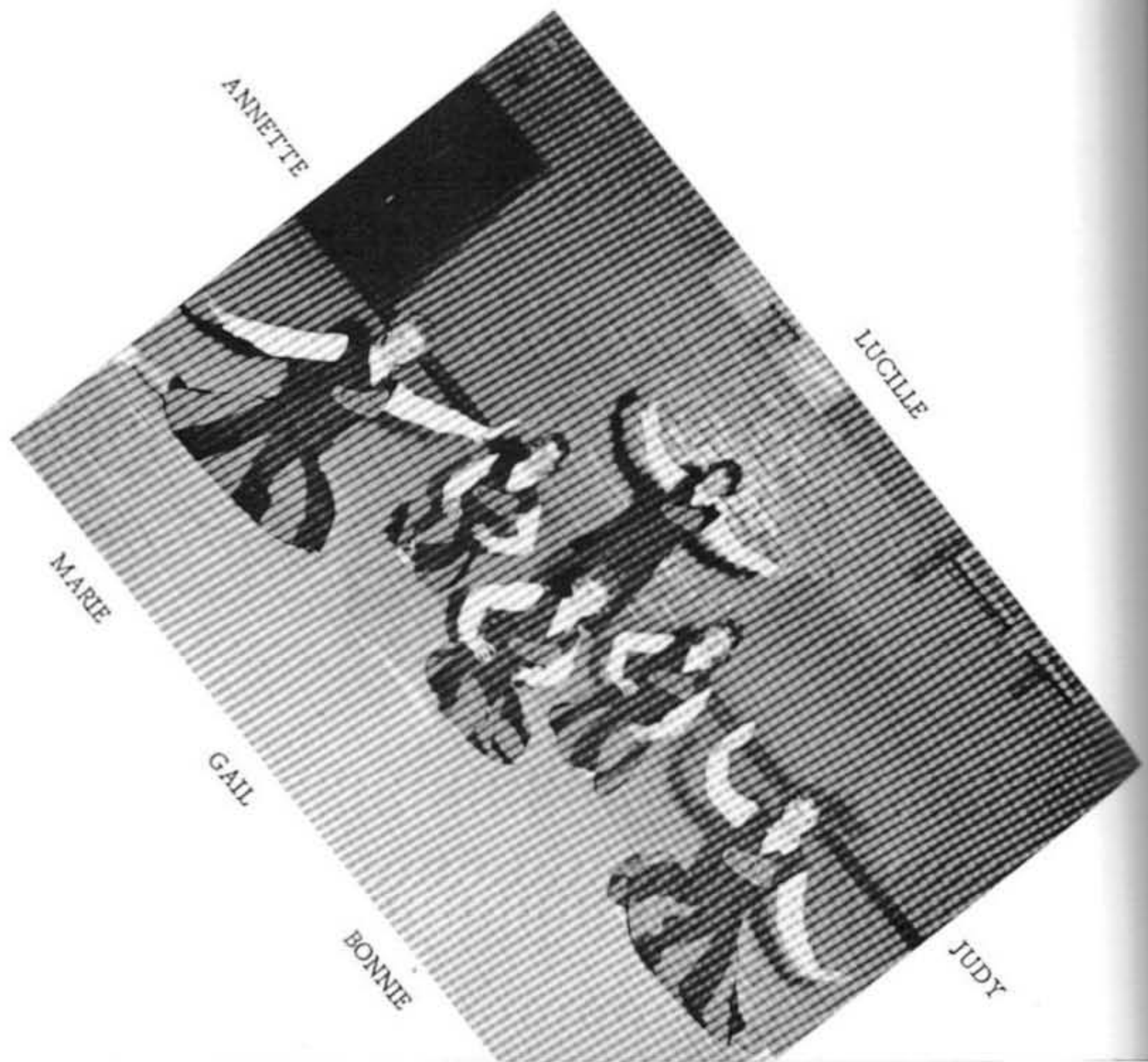
Activities



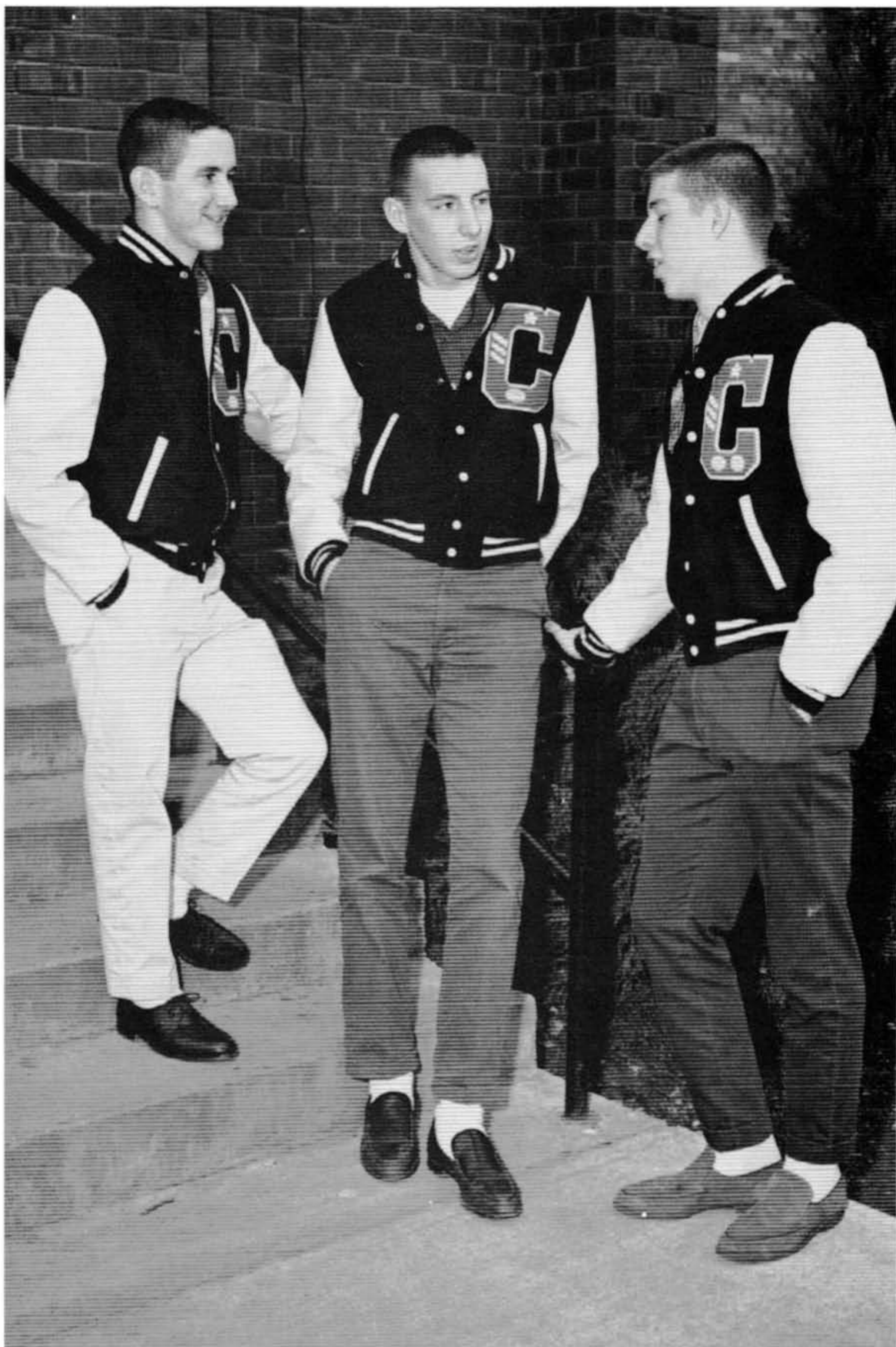


Marie Meredith, Annette Keelin, Gail Wellman, Bonnie Bocoock, Judy Mulvaney, and Lucille Ferguson.

CHS
Cheerleaders



All NEKC



ROBERT REMMELE, LARRY GRAY, and JIM DONOVAN



Wildcats of 1960

ROW 1: Bill Bryan (manager), Joe Nunley, Jim Hammond, Bobby Craycraft, Ronnie Howard, Bill Tom Ross, James Crouch, Jerry Heaberlin, James Preston, Grady Walter, David Robinette, and John Barker (manager).

ROW 2: Coach Eugene Foster, Jim Adkins, David Davidson, Robert Remmele, Jim Donovan, John Bates, Mike McKnight, Denny Williamson, Kenneth Liebee, Jack Marushi, James Shivel, Joe Mellon, and Warren Dixon.

ROW 3: Roger Moore, David Burke, Kenneth Hughes, Russell Wilson, Paul Benard, Larry Gray, Joe Stewart, David Hunt, Kenny Stanton, Alva Chaffin, Larry Lee, and Coach Harold Barker.

Co-Captains



ROBERT REMMELE JIM DONOVAN RUSSELL WILSON LARRY GRAY



The Lineup

	Davidson	Burke	Marushi	Chaffin		
		Donovan				
Wilson	Bates	Hunt	Stewart	Remmele	Moore	McKnight

"TEAM'S RECORD"

WILDCATS	OPPONENTS
25	Dayton 7
0	Ashland 20
6	Pikeville 14
12	Wurtland 7
6	Paintsville 38
13	Russell 13
25	Ceredo Kenova 6
13	McKell 61
28	Louisa 55
<u>50</u>	Raceland 7
Total Points 178	

1961 Homecoming Queen



SHARON KAY CROUCH



Attendants

JO ANN CUMPSTON

SHIRLEY PELFREY

Sharon is being crowned by the 1959-60 Queen, Kaye Maynard.

Basketball Team

1961



SENIOR PLAYERS: Lonnie McComis, Jim Donovan (Captain), Don O'Pell, Bill Bryan,
and John Wayne Barker.
Bobby Craycraft, John Bates, James Shivel, Grady Walter, Jim Adkins, and Jack Marushi.

Coach: HAROLD BARKER
EUGENE FOSTER



Track Team

ROW 1: Jim Adkins, Grady Walter, Eddie Butler, Alva Chaffin.

ROW 2: Jim Hammond, Paul Benard, Joe Stewart, Tommy Cole, David Burke.

ROW 3: Jim Donovan, Joe Perdue, Mike McKnight, David Davidson, and John Bates.

Alternate Cheerleaders



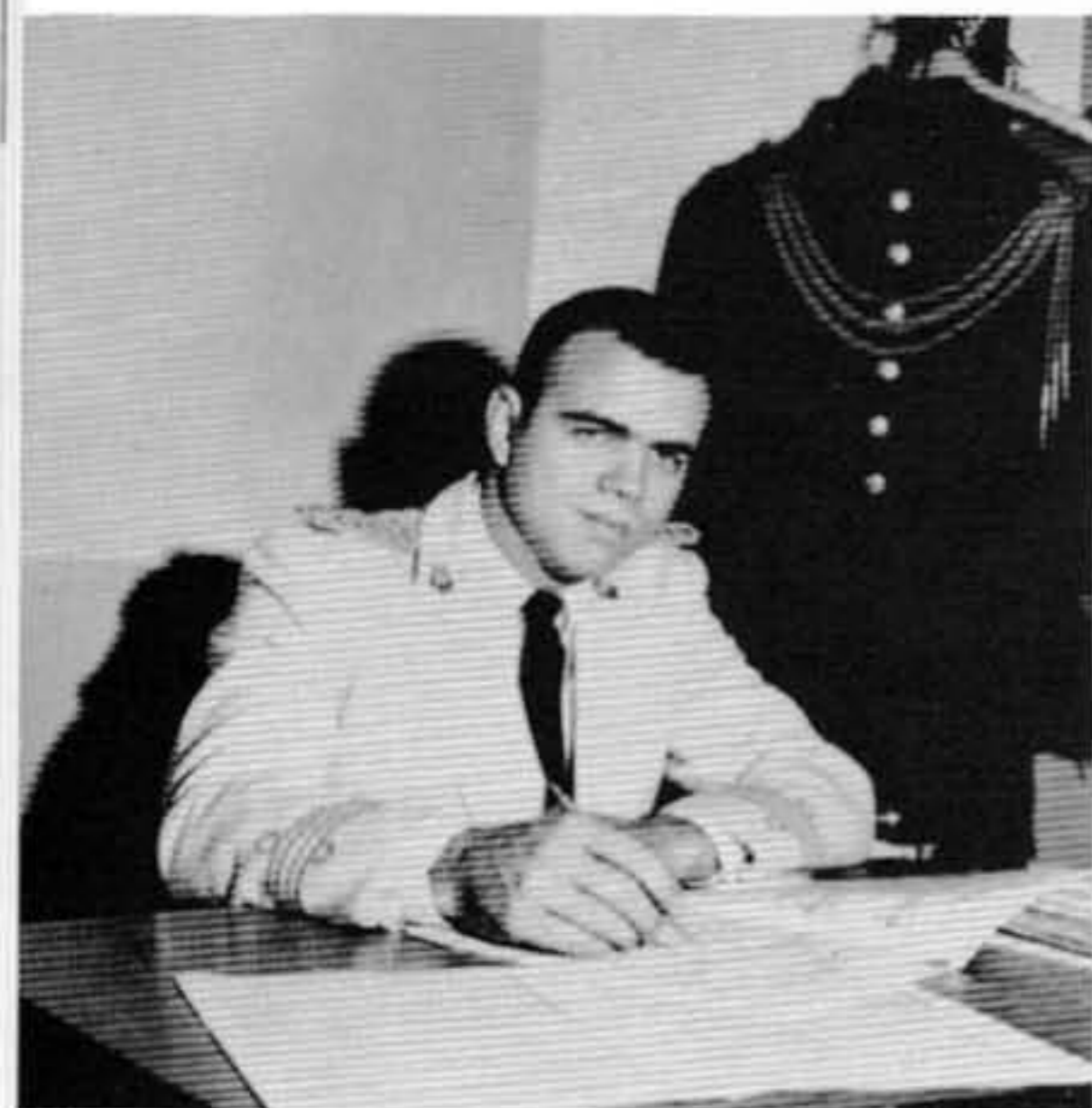
KAREN HEABERLIN

BRENDA MAYNARD

MARY PELFREY



Catlettsburg High School Band



Director

MR. HOWARD RULE

Mr. Rule came to direct our band in 1960. Since he came, the band has shown much improvement, of which we are very proud.

DRUMMER SECTION



Kenneth Arthur (cymbals), Larry Johnson, Bobby Jobe, Johnny Clark, Jimmy Pelfrey, David Osborne, and Tommy Cole (drum).



SHARON CROUCH
Senior

DRUM MAJOR
GARY BRANHAM
Senior



KAYE JORDAN
Senior

CHS

Majorettes



K. Jordan, Susy Lewis, Lequita Adkins, Glorious Colvin, Patsy Wilson, S. Crouch, and G. Branham.

Spring Carnival Queen

LINDA WORKMAN



QUEEN AND ATTENDANTS

Sharon Caldwell (9th), June Crace (11th), Robin Keyser (10th), Queen, Glorious Colvin (10th), Annette Keelin (12th), Sue Lyons (12th), and Judy Mulvaney (11th).



ANNUAL SUBSCRIPTION SELLERS

Annette Keelin, Linda Workman, Patsy Chaffin, Judy Mulvaney, Robin Keyser, and Delbert Hodge.

Prom Queen and King

Queen: LUCILLE FERGUSON

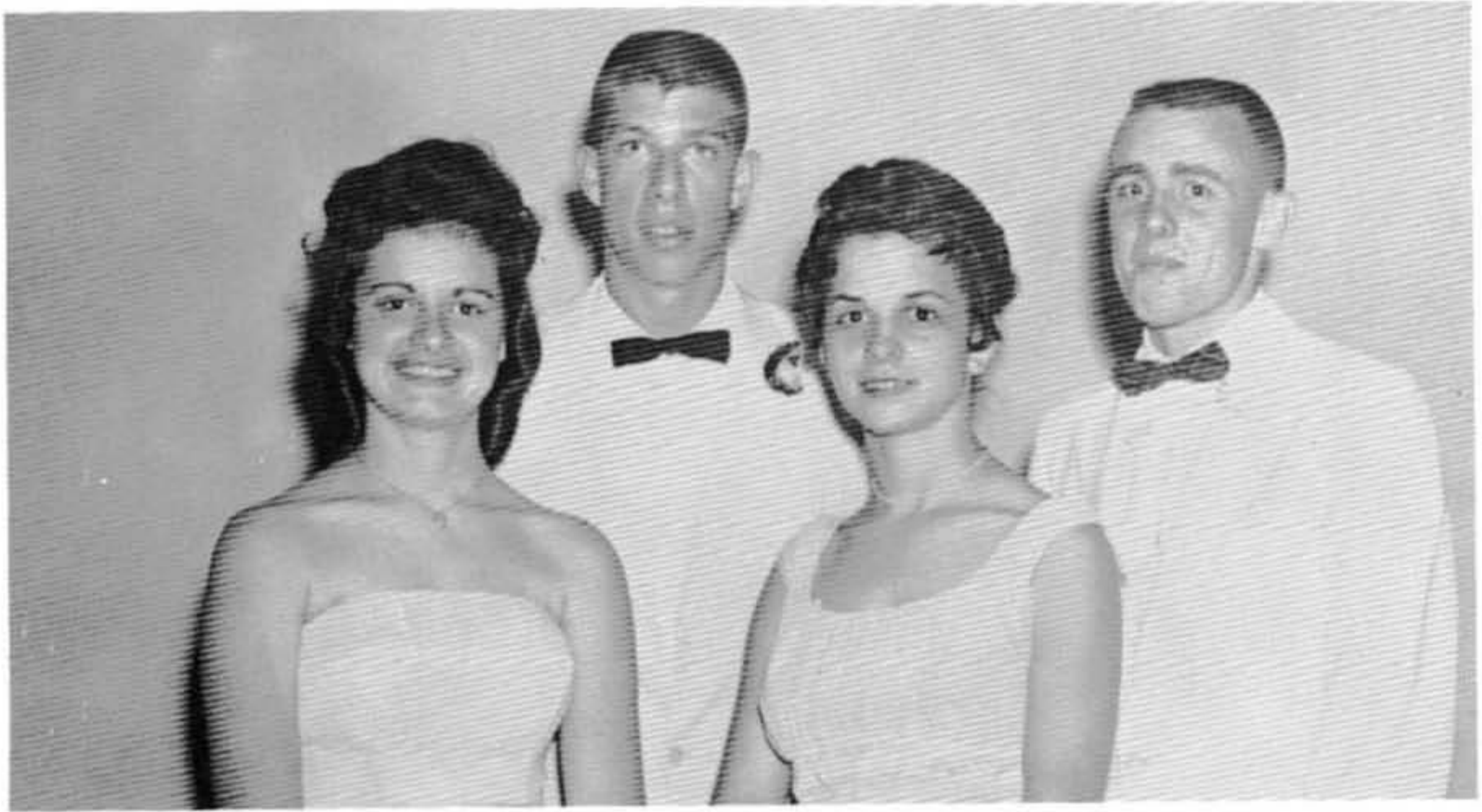
May 13, 1961

King: JAMES DONOVAN

Henry Clay Hotel

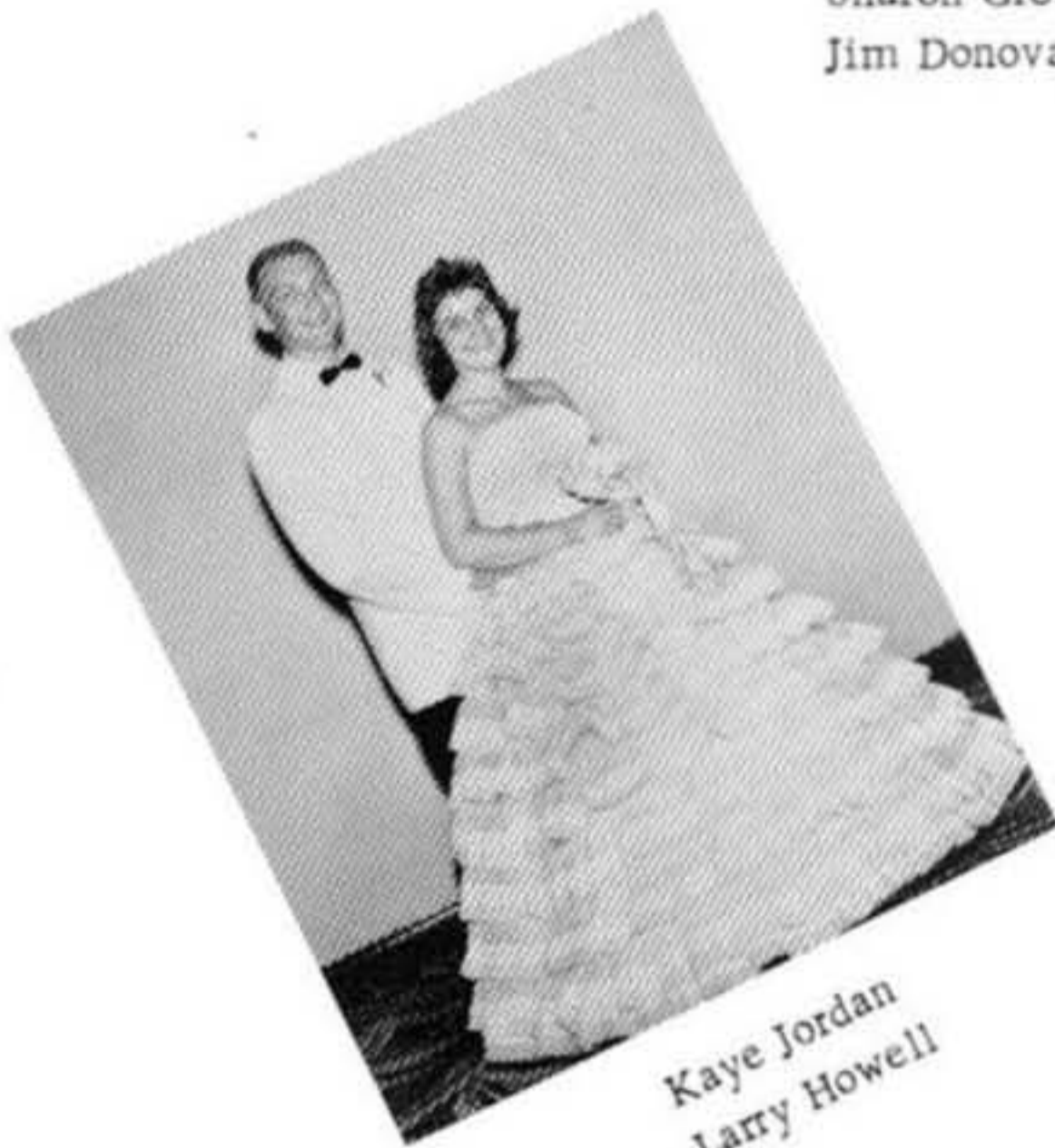


Prom



Sharon Crouch
Jim Donovan

Annette Keelin
Albert Crank



Kaye Jordan
Larry Howell



Karen Heaberlin
Marvin Lewis



Shirley Pelfrey
Jon Berger

Prom



Karen Griest
Ted Walter



Gail Wellman
Roger Hensley



Glorious Colvin
Ronnie Williamson

Mary Sue Lyons
Larry Cripple



Susy Lewis
Lonnie McComis



Prom



ATTENDANTS

FIRST ATTENDANTS: Jon Berger and Karen Heaberlin
SECOND ATTENDANTS: Ronnie Williamson and Mary Sue Lyons
THIRD ATTENDANTS: Ted Walter and Sharon Crouch



Music was provided by the
Howard Rule Sextet.

Advertising Managers



SHARON CROUCH

BARBARA FRILEY

IRIS DRESS SHOP

2704 Louisa Street

Catlettsburg, Kentucky

Phone 739-5815



"WHERE TEENAGERS SHOP"



COLVIN'S SUNOCO STATION

918 Center Street

Catlettsburg, Kentucky

Ronnie
McLone

Larry

Russell
Wilson

Cripple

Larry
Dyran

Sharon
Crouch

Jim
Homon
Ranetta
Keele

Don
O'Fall

Donc
Sellers
Lucille
Ferguson

Galina
Gralley

Bill
Thompson
Dick
Hall

Harold's & Flo

Jo Ann
Compton
Ted
Walter



Karen
Griest

Rosemary
Conley

Theresa
Remmele

Ken Taylor

Phyllis
Lynne
Arthur

June
Chyn
Darlene
Poe

Patty
Mark
Gary

Bill
Bryce
Donna
Rice

John
Wayne
Barber

George
Smith

Mary
Porter

Kaye
Jordan

Ronnie
Williamson

Arthur
Anderson

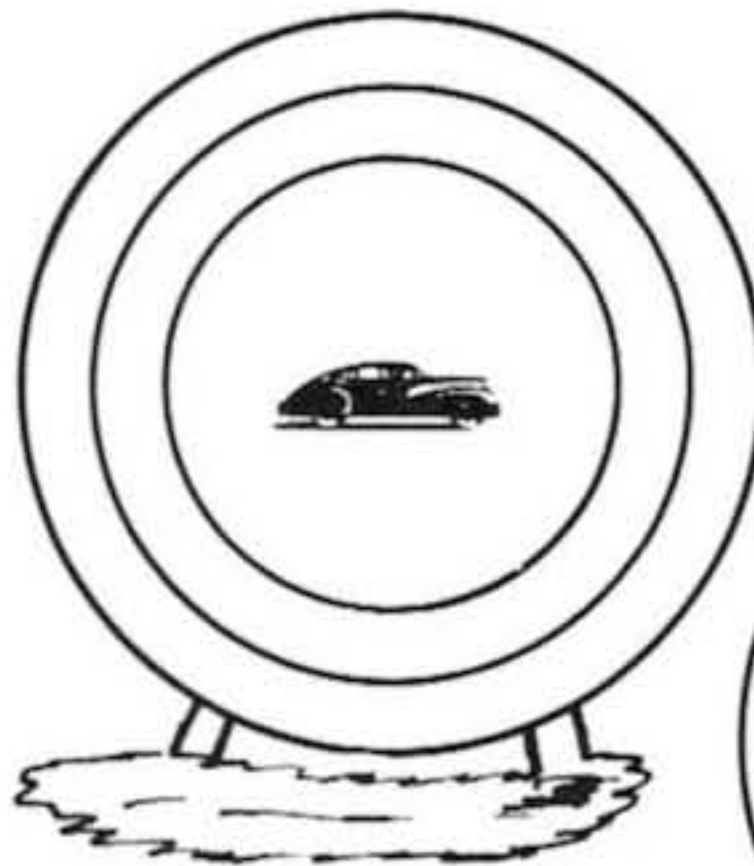
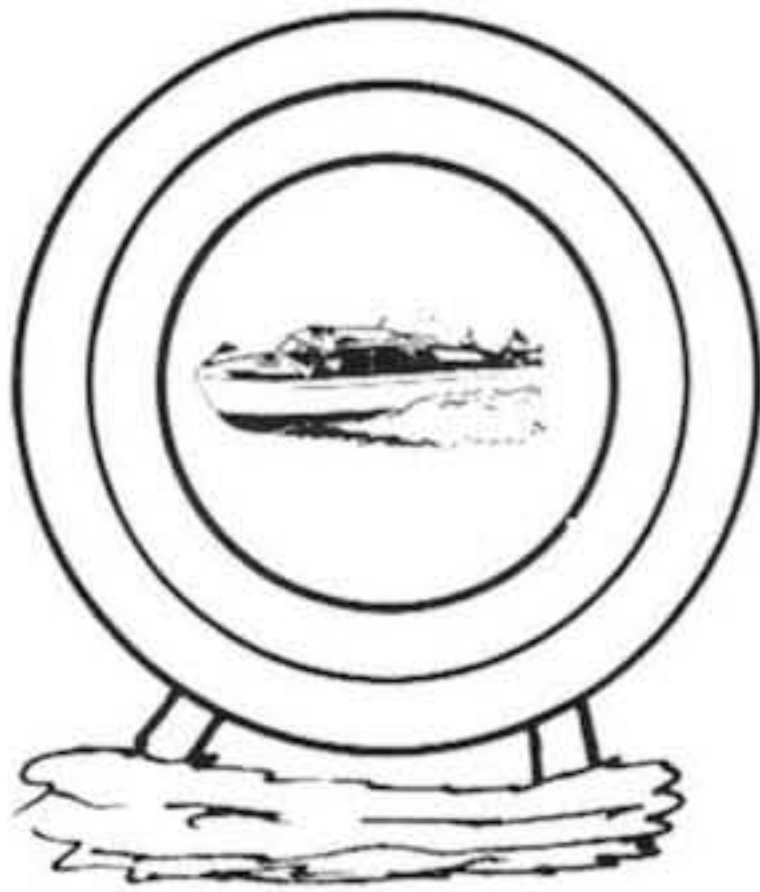
Judy
Storie

Wendy
Crawford
Linda
Lind

Joe
Gardner
Frank
Hillman

CONGRATULATIONS TO THE GRADUATES
CLASS OF '61

Whatever Your Aim in Life May Be - - -



Hit the
Bullseye With
Thrift!

Save Your Way to Happiness at

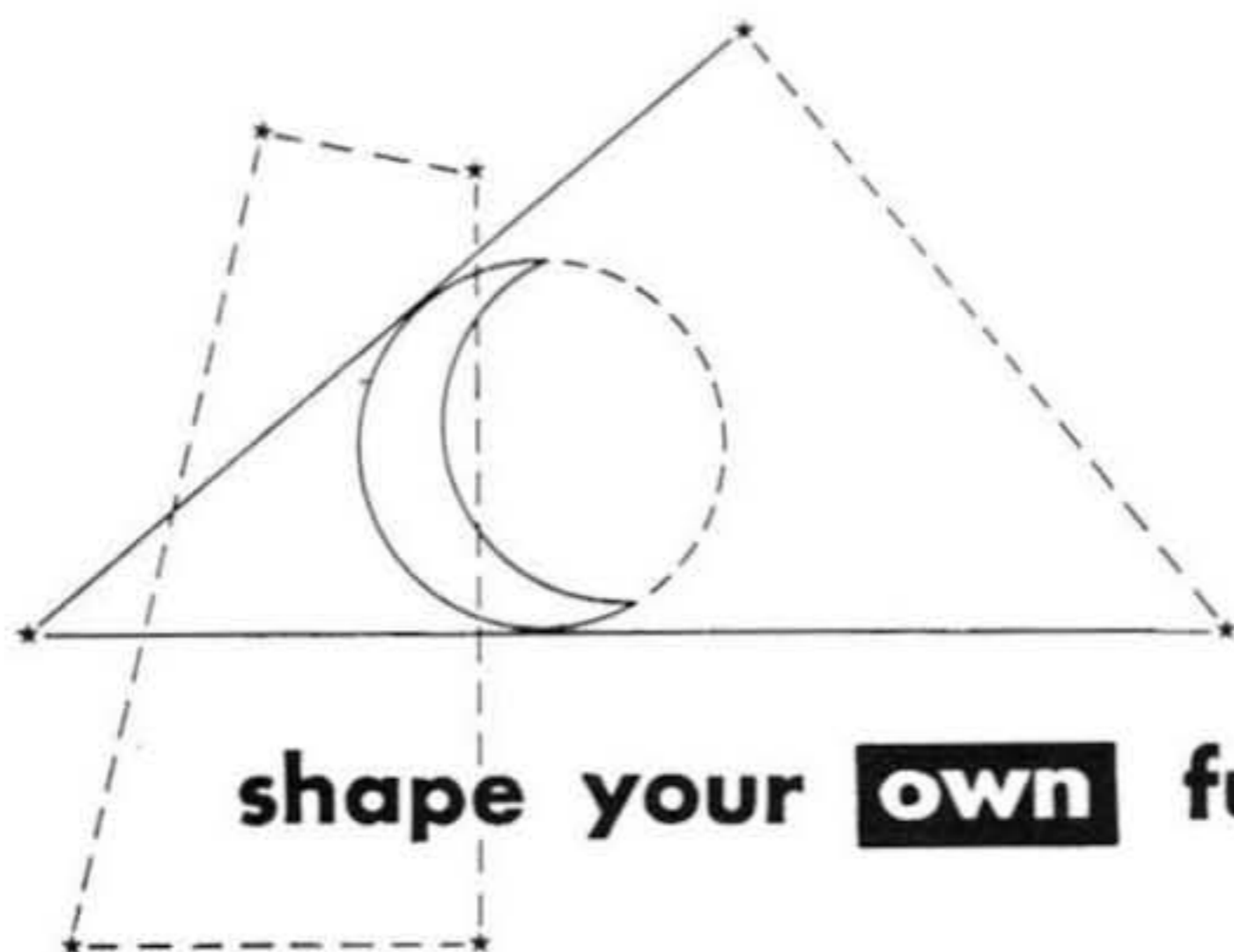
KENTUCKY-FARMERS BANK

Catlettsburg, Kentucky

Where
Your Savings Earn 3% Interest

Member F. D. I. C.

"MAKING FRIENDS THROUGH SERVICE"

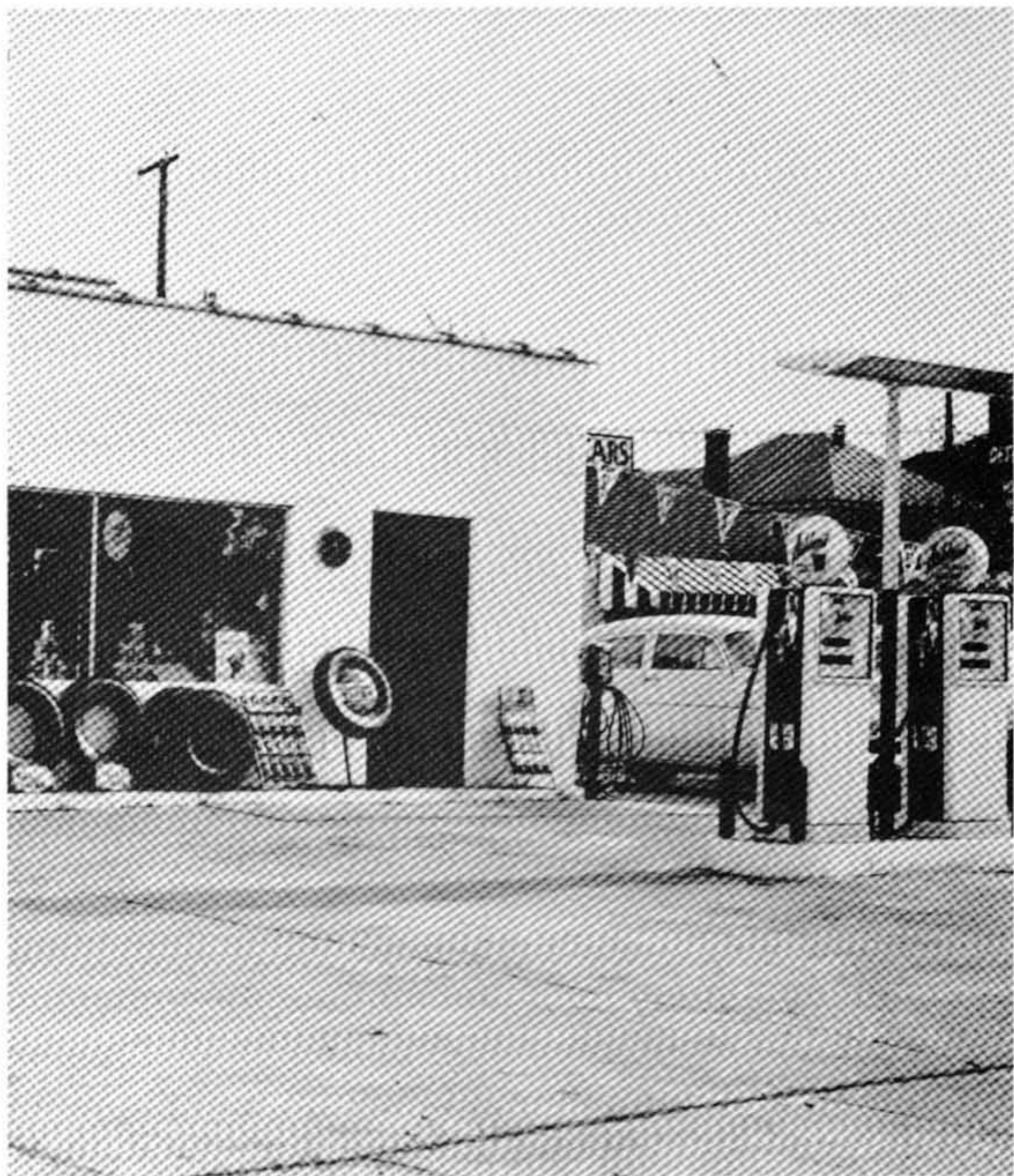


No other person is exactly like you. That's why you need an educational plan to fit your particular needs. If possible your plans should include college training. Plan now for the future . . . with an eye on ASHLAND OIL.

Our trained personnel will be happy to counsel with you.

ASHLAND OIL & REFINING COMPANY

Ashland, Kentucky



WECHSLER SERVICE STATION

3001 Louisa Street
Catlettsburg, Kentucky

Phone 739-5411



THE SPORTSMAN'S CREED

THE PLAYERS

1. He lives clean and plays hard. He plays for the love of the game.
2. He wins without boasting, he loses without excuses, and he never quits.
3. He respects officials and accepts their decisions without question.
4. He never forgets that he represents his school.

THE COACH

1. He inspires in his boys a love for the game and the desire to win.
2. He teaches them that it is better to lose fairly than to win unfairly.
3. He leads players and spectators to respect officials by setting them a good example.
4. He is the type of man he wants his boys to be.

THE SPECTATOR

1. He never boos a player or official.
2. He appreciates a good play, no matter who makes it.
3. He knows the school gets the blame or the praise for his conduct.
4. He recognizes the need for more sportsmen and fewer "sports."

ARMCO STEEL CORPORATION

ASHLAND WORKS

ASHLAND, KENTUCKY



CATLETTSBURG FEDERAL SAVINGS AND LOAN ASSOCIATION

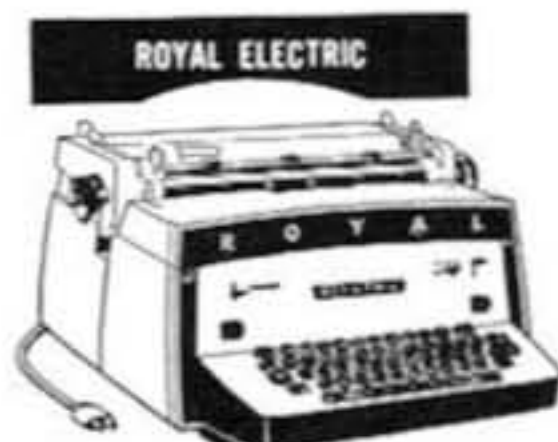
2717 Louisa Street

Catlettsburg, Kentucky

Phone 739-4911



ROYAL "FUTURA" PORTABLE



ROYAL ELECTRIC



ROYAL STANDARD

THE
ROYAL
TYPEWRITER FAMILY

New - Used - Rentals - Guaranteed Service - Easy-Terms

TERREO OFFICE MACHINE SERVICE

211-15th Street

Ashland, Kentucky

Dial 324-6663

**KILGORE & COLLIER
FUNERAL HOME, INC.**

Since 1868

2702 Panola Street
Catlettsburg, Kentucky

Phone 739-5155

**CATLETTSBURG
KENOVA & CEREDO
WATER COMPANY**

2511 Broadway
Catlettsburg, Kentucky

Phone 739-4712

FREEDMAN'S DEPARTMENT STORE

121 26th Street

Catlettsburg, Kentucky

Phone 739-5414





DEE'S FLOWERS

2707 Louisa Street
Catlettsburg, Kentucky

Phone 739-4324

WINN A. FIELD REAL ESTATE

Bonds -- General Insurance

2703 Louisa Street
Catlettsburg, Kentucky

Dial 739-4238



ROSS FURNITURE COMPANY

2711 Louisa Street
Catlettsburg, Kentucky

Phone 739-4822

BOWLING FEED & HARDWARE

35th and Court Street
Catlettsburg, Kentucky

Phone 739-4318





RAY ZACHEM VARIETY STORE

208 26th Street
Catlettsburg, Kentucky

You Name It, We Have It,
Toys, Gifts, Notions,
Dry Goods, Home Furnishings

WAUGH'S GARAGE

24-Hour Wrecker Service

Complete Refinish and Auto Repair

3027 Louisa Street
Catlettsburg, Kentucky

Phone 739-5466



EWING INSURANCE AGENCY

2708 Louisa Street
Catlettsburg, Kentucky

Phone 739-4515



ZWICK MUSIC CO.

Baldwin Pianos and Organs

Everything Musical

325 14th Street
Ashland, Kentucky

Phone 324-5770





**DIXON'S
CLEANERS & DYERS**

26th Street
Catlettsburg, Kentucky

Phone 739-4322

GAR-SON DRUGS

26th Street
Catlettsburg, Kentucky

Phone 739-5742



**HARPER & RUNYON
HARDWARE CO.**

2501 Center Street
Catlettsburg, Kentucky

Phone 739-4832

FRAILIE PHARMACY

2715 Louisa Street
Catlettsburg, Kentucky

Phone 739-4314





KOPP OFFICE SUPPLY, INC.
335-15th Street
Ashland, Kentucky
Phone 324-1218

J. P. RICHARDSON
FURNITURE CO.
111-26th Street
Catlettsburg, Kentucky
Phone 739-4313

G. F. GALLUP JEWELRY
Louisa Street
Catlettsburg, Kentucky

BLUE RIBBON LANES
1108 Winchester Avenue
Ashland, Kentucky
Phone 324-6623

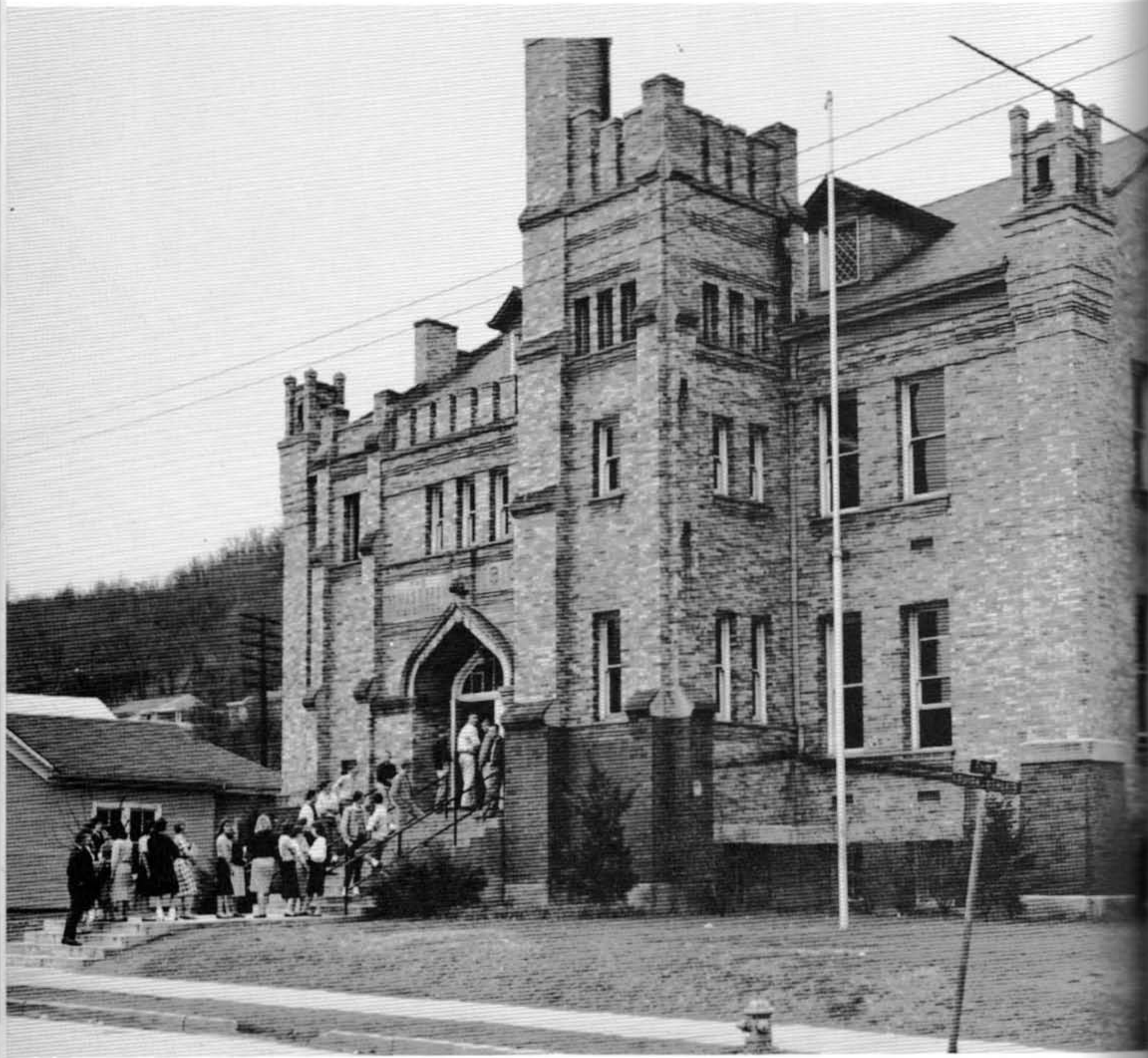
PENNINGTON'S GROCERY
210-25th Street
Catlettsburg, Kentucky

FLORENCE GIFT SHOP
2803 Louisa Street
Catlettsburg, Kentucky

CARROLL OFFICE EQUIPMENT
1436 Winchester Avenue
Ashland, Kentucky
Phone 324-7186

Our School

THOMAS R. BROWN HIGH SCHOOL
Catlettsburg, Kentucky





Farewell

As we pass slowly out of these doors that have seen so many come and go, all too quickly we hear the doors of the years past, quietly shutting behind us; and we go forth eagerly to open the doors to the future and whatever it may bring.

For when one door is shut - another opens.



Catlettsburg High School Teacher With 37 Years Of Service Is Retiring

CATLETTSBURG: A teacher with 37 years of service at Catlettsburg High School retired at the end of the school term and was honored by members of the Catlettsburg Education Association and school board.

W. B. Stallard was head of the mathematics department at CHS at the time of his resignation. He began his career in Georgia and Alabama schools.

A native of Whitesburg, he received his AB degree from Kentucky Wesleyan College when the school was located at Winchester. He earned his MA degree at the University of Kentucky, Lexington.

The two education groups presented the retired teacher with a reclining lounge chair on his birthday anniversary on May 3rd before school closed.

His wife, the former Nora Ruby, is also an educator. She is principal of Maxine Yost School. The couple are the parents of three children, Mrs. Hugh (Katherine) Jenks III, who attended Marshall College at Huntington; Dow Stallard, University of Kentucky and Bill Stallard who received his Ph.D. degree in botanical science from the University of Texas.

The popular professor was also honored by freshman and junior English students at CHS. They



W. B. STALLARD

dedicated a book of poems to him and this is the first time a book of poems has been published at the school. Eighty-six students contributed to the book. Mrs. Lovell Liles, head of the English department, served as editor.

A quote from a poem dedicated to Stallard—says: "he is always working and never idle and in his years of teaching, he has never failed to do his best for each boy and girl."

The other poems in the book included various subjects, some serious, some humorous. The books are on sale for anyone desiring to own one, according to Mrs. Liles.

Mrs. Lile's students also participated in a recent essay contest sponsored by the Propellor Club. Of the fourteen entries, five received valuable prizes. Jerry Ross won a 10 day river boat trip to Owensboro for himself and one other person; Tommy Chaffins won a fifty dollar bond; Barbara Friley was the recipient of a 25 dollar bond; David Burke and Susie Lewis each won excellent desk reading lamps. Mrs. Liles will also get a trip on a river boat during the summer months.